

2019

Translation of Pattaya City Yearly Report (2019)

RESEARCH AND EVALUATION SECTION

Strategic Development Unit

Bureau of Strategy and Budgeting | Pattaya City

PREFACE

The 2019 yearly book report was published by Pattaya City to publicize information in various aspects of Pattaya City comprising of infrastructure aspect, economic aspect, social aspect, natural resources and environment aspect and politic and administration of Pattaya City. Besides, this yearly book report also presented some parts of EEC (Eastern Economic Corridor) movement.

Pattaya City sincerely thanks other government agencies, state enterprises, and every related work units for providing information to publish this book. Pattaya City highly expects that this book will be beneficial for interesting person to take this book as a reference in studying and doing researches.

Publishing Staff
Research and Evaluation Section
Strategic Development Unit
Bureau of Strategy and Budgeting
Pattaya City

Official Logo of Pattaya City



The Official Logo of Pattaya City is the circle with the size of 5 centimeters diameter. There is an ancient Thai warrior who fought against the Burmese Army making the way to southeast and having a rest at Pattaya. There is also the picture of Pattaya Sea and Beach with the words upward saying "Muang Pattaya and the downward saying "Chonburi Province".

Announced in the government gazette, copy 104, part 169, pages 244

Dated on 27 August 1987

The King's Oath Symbol

Royal Decree

Special Development of Eastern Area

2018

His Majesty King Maha Vajiralongkorn Bodindradebayavarangkun.

Issued on 10 May 2018

The third year of this present King

King Maha Vajiralongkorn Bodindradebayavarangkun has his demand to announce that:

There should be the law for the special development of eastern area.

This Royal Decree consists of the regulations dealing with the limitation of the right and freedom of a person that mentioned in Act 26 together with Act 34, and Act 37 of the constitution of the Kingdom of Thailand which allows to be able to take action under the power of regulations and laws.

The reason and necessity for limiting the right and freedom of a person under this Act is for developing the eastern area systematically responding to the principle of sustainable development, especially to promote commercial and industrial engagement that utilizes high and modern technology, create innovation and be friendly to environment. The legislation of this ACT gets along with the condition mentioned in Section 26 of the constitution of Thailand.

Section 1. This Royal Decree is called "The Royal Decree of Special Development Area for the Eastern Part 2018.

Section 2. This Royal Decree is effective after the day of the announcement in the government gazette.

Section 3. To terminate:

(1) The command of the National Peace Keeping Council No. 2/2017 on the Special Eastern Economic Development Corridor dated 17 January 2017.

(2) The command of the National Peace Keeping Council No. 28/2017 on the increasing measurement of effectiveness of Special Eastern Economic Development Corridor

dated on 26 May 2017.

(3) The command of the National Peace Keeping Council No. 47/2017 on the limitation of using the land in the Special Eastern Economic Development Corridor dated 25 October 2017.

Section 4. In this Royal Decree:

“The Special Eastern Economic Development Corridor” means the area in Section 6.

“The Promotion of Special Economic Area” means the area within The Eastern Corridor Special Economic Development Area as announced by the committee in Section 40.

“The entrepreneur in The Promotion of Special Economic Area” means the entrepreneur as a legal entity or other people who have special ability allowed by the permanent secretary as mentioned in the regulations fixed by the committee to do industrial business responding to the demand of the goal of Special Economic Development Area.

“Special Purposive Industry” means the industry the policy committee mentioned in Section 39.

“Purposive Industry” means the purposive industry as mentioned in the law to add the capability of the country to compete in the purposive industry.

“The Policy Committee” means the committee of The Special Eastern Economic Development Area.

“The Office” means the office of the committee of The Special Eastern Economic Development Area.

“Permanent Secretary” the permanent of the Special Eastern Economic Development Area.

“Government Units” means the government agents, state enterprises, local administration organization, public organization or other government units.

“Fund” means the fund for the Special Eastern Economic Development Area.

Section 5 : The Prime Minister is in charge of this Royal Decree.

Part 1
General Chapter

Section 6 The area in Chachoengsao, Chonburi and Rayong and others that are in the eastern part fixed and added by this Royal Decree are the Special Eastern Economic Development Area to serve the following purposes.

(1) Develop modern economical activities that are friendly to environment to increase the ability to compete of the country.

(2) Organize one stop services of the government sectors to reduce cost in doing business.

(3) Build up effective infrastructure and public utility with continuity and they are easy for people to access and perfectly link to each other.

(4) Limit the use of the land properly and fit for the condition and potential of the land responding to land sustainable development.

(5) Develop cities to be modern as international class suitable for convenient and safe living, easy to access for all and do business with quality.

In case of necessity to get benefit in running the project to meet the purpose (3), there will be the legislation of the Royal Decree to make some parts of the connected area as mentioned in the space 1 and the area which is necessary for running the project might also be declared to be the Special Eastern Economic Development Area.

Notice: The reason to declare this Royal Decree is that the eastern part is the area with the high economical potential. If there is a continuous and systematic area development responding to the sustainable development principle, there will really be the proper use of the land and it will help increasing the capability to compete of the country, especially the encouragement of commercial and industrial business with modern and high technology, creativity, friendliness of environment and previous agriculture, and ways of life of the people in the area. However, the issued laws do not response to this development and there is no plan to administrate the land as a whole unit and made the development of the area scattered. The result of unintegrated development made the development of the

eastern part facing less potential and the management of the basic public utility of the government sectors hasn't been continued and connected. Therefore, it is appropriate to limit the eastern part to be the special Eastern Economic Development Area. There is a clear plan of utilizing the land suitable for the potential of the area and response to the principle of sustainable development. Moreover, the basic public utility will be connected through the area and the city will be modernized as an international class suitable for doing business and living, the services of government units will be centered as a completed network, including the definite right and benefit will be offered to ones who are entrepreneurs in the area. These are the necessity to launch this Royal Decree.

The Announcement of the Committee of Special Area Development for Sustainable Tourism

Subject : The Limitation of the Special Area for Sustainable Tourism of Pattaya City and Related Areas

According to the authority under Act 20 (8) and Act 35 of the Royal Decree for promoting the organization to administrate the special area for sustainable tourism (Public Organization) 2003, the Committee of Special Area Development for Sustainable Tourism with the agreement of the Cabinet has made the announcement as follows:

To limit the area of Pattaya border and the related areas comprising of Pattaya City together with the sea area, Koa Larn, Koa Pai, the area of Banglamung Municipality, Takhian Tia Municipality, Norng Prue Municipality, Pong Municipality, Huay-Yai Municipality, Khao Maikaew Subdistric Administration Organization, Norng Pla Lai Subdistric Administration Organization, Banglamung District and Najomtian Municipality, Sattahip District, Chonburi with the total area of 928.47 square kilometers or 580,293.75 Rai are in the area of this announcement as the special areas for sustainable tourism with the borders as follows:

In the North Direction

The first point begins from the first spot that is located at the border line separating Pattaya City and Banglamung Municipality, Banglamung District, Chonburi Province reaching the seashore which is the line along the seashore of Banglamung Municipality heading to the north where the border lines of Banglamung Municipality and Laem Chabang Municipality meet together.

The second point begins from the second point that is the border line separating Takhian Tia Municipality, Banglamung District and Chaoprayasurasak City Municipality, Sriracha District heading to the southeast reaching the third point that is the border line separating the area of Banglamung District and Sriracha District Chonburi and Pluakdaeng District, Rayong Province.

In the East Direction

The Third point is the border line separating Khao Maikaew Subdistrict Administration Organization, Banglamung District, Chonburi Province and Map Yang Porn Subdistrict Administration Organization, Pluakdaeng District, Rayong Province heading to the south reaching the fourth point that is the crossing border line of Banglamung District, Chonburi Province and Pluakdaeng District and Nikhom Phatthana District, Rayong Province.

The fourth point is the border line separating Pong Municipality, Huay-Yai Municipality, Banglamung District and Makharm Khu Subdistrict Administration Organization, Nikhom Phatthana District, Rayong Province heading to the southwest reaching the fifth point that is the border line separating Banglamung District, Sattahip District, Chonburi Province and Ban Chang District, Rayong Province.

In the South Direction

The fifth point is the border line separating Huay-Yai Municipality, Banglamung District and Bang Saray Subdistrict Administration Organization, Sattahip District heading to the southwest reaching the sixth point that is the meeting point of the border line separating Huay-Yai Municipality, Banglamung District and Bang Saray Subdistrict Administration Organization, Sattahip District.

The sixth point is the border line separating Huay-Yai Municipality, Banglamung District and Narjormtian Subdistrict Administration Organization, Sattahip District heading to Northwestern to the seventh point that is the meeting border line of Huay-Yai Municipality Banglamung District and Na Chom Thian Municipality, Sattahip.

The seventh point the border line separating Na Chom Thian Municipality and Na Chom Thian Subdistrict Administration Organization, Sattahip District heading to the southwest to the eighth point is the meeting border line of Na Chom Thian Municipality and Bang Saray Municipality, Sattahip District of which the borderline meets the seashore.

In the West Direction

The eighth line is the coast line of Na Chom Thian Municipality, Sattahip District heading to the north to the ninth point that is the meeting border line of Pattaya City, Banglamung District and Na Chom Thian Municipality, Sattahip District.

The ninth point is the line heading to the west to the tenth point at N 1,423,000 E 677,800.

The tenth point is the line heading to the north to the eleventh point at N 1,437,700 E 677,700.

The eleventh point the line heading to the east to meet the first point. This is shown in the attached map at the end of this announcement.

Announced on 28 April 2009

General Soontorn Khamkomkun

The President of the Committee of Special Area Development
for Sustainable Tourism

The Four-year Development Plan (2018 – 2022) of Pattaya City

Visions of Pattaya City

“The City of Standard Tourism Economic, Sustainability and Being Habitable”

Missions

1. Develop the city to be livable and sustainable covering economics, society, infrastructure and environment.
2. Reinforce the competency of Pattaya City to be a tourism economical city with standard to become the linkage of the region.
3. Develop human resource potential and quality of life of the locals with participatory and fairness.

Objectives

1. To create standard and safety satisfaction of the city in order to take economic benefits from tourists, visitors and investors into the city continuously.
2. To make Pattaya City occupy running-on development, balance and coherence with demands of every section.
3. To prepare readiness of Pattaya City in all dimensions to gain capability of becoming the city center of the development in the eastern part of Thailand.
4. To develop human resource in Pattaya City area to have a high quality in order to become a part of sustainable development process, have good quality of life and stable income and earning life and obtain the spread benefits equally and justly.
5. To develop the organization of Pattaya City to become the organization with high quality and performance and be able to administrate and manage the metropolitan as

the center of the eastern part and be able to respond the demand of a huge number of tourists and visitors with different cultures.

Goals

1. Citizens, visitors and investors obtain comfort, convenience and reliability on security together with good quality of public utility, public services and good environment.
2. Pattaya city has sustainable development as follows:
 - 2.1 Work units, organizations, institutions and local government units relating to Pattaya City have integration along the area and the linkage area development.
 - 2.2 There is a participation process in setting up development direction and there are strong controlling and following up.
3. Pattaya City becomes the city center of the region.
4. Pattaya is the international standard tourist attraction.
5. Every citizen of Pattaya City together with related persons have good quality of life and obtain potential development continuously to support sustainable city development equally.
6. Pattaya City becomes the high performance organization.

Strategies and Paths of City Development

Strategy 1. To create the potential of Pattaya City to support sustainable development of the livable city of everyone.

Path of Development / Strategy

- 1.1 Promote constructing necessary infrastructure for city growth and development.
- 1.2 Develop the potential to support the increasing traffic in the future.
- 1.3 Promote the reliability focusing on safety and peace in every aspect.

- 1.4 Develop the competency to manage pollutions or the side effects of city development and tourism (water pollution, air pollution, waste and scenery) to be low carbon city.
- 1.5 Increase the potential to support the growing tourism and tourist attractions.
- 1.6 Strengthen participation process of developing the city and city plan.

Strategy 2. To develop Pattaya City to become the world class city of tourism economic and the metropolitan of the region.

Path of Development / Strategy

- 2.1 Speed up the development process to make Pattaya city be a smart city.
- 2.2 Create various tourism activities that can give tourists more new experience.
- 2.3 Encourage organizing leisure activities and land, water and aero sports.
- 2.4 Build up the image of Pattaya City as the tourist attraction, a place for organizing conferences, accommodation, the medical hub, or the place of world class investment.
- 2.5 Publicize the right fame and importance of Pattaya City to Thai society.

Strategy 3. To develop human resources and promote the local people's quality of life continuously.

Path of Development / Strategy

- 3.1 Encourage the education form of the youth's right to the way of development.
- 3.2 The population of Pattaya City in all ages are developed to meet quality of life, potential, work skills and chances for having jobs and the distribution of incomes will be done towards all ranges of ages.
- 3.3 Promote quality of health of people and tourists including the good hygiene of the area.
- 3.4 Prevent and Protect local people, tourists from problems of epidemics, new diseases, and reoccurred diseases.
- 3.5 Promote the strength of consumers' protection.
- 3.6 Promote and conserve customs and traditions, religion, culture, sense of relationship towards Pattaya City including realizing towards consciousness and duty of good citizen.

- 3.7 Increase the effectiveness of servicing system, control and protect epidemic diseases caused by pets and homeless animals.

Strategy 4. To create the integration of development among work sections, organizations and local organizations.

Path of Development / Strategy

- 4.1 Strengthen the cooperation among central government agencies, and both domestic and overseas organizations dealing with development, namely, the cooperation between Pattaya City and central government agencies, Pattaya City and organizations or large companies for sustainable development of Pattaya City and overseas organizations.
- 4.2 Strengthen “Pattaya Team” to create integration of full area management.
- 4.3 Coordinate and support the development of local administration organizations through the local development organization.
- 4.4 Promote group gathering, role and cooperation process of communities, clubs, associations, organizations, and networks in cooperative development and problem management.

Strategy 5. To create the potential of Pattaya City to be metropolitan management and the center of the region.

Path of Development / Strategy

- 5.1 Improve the administration structure of personnel, roles and duties, and become more independent to be suitable for metropolitan management.
- 5.2 Develop the revenue collection and earning income systems to be sufficient for Pattaya City management. (Investing with private sectors, increase efficiency / path of revenue collection, non-registered population and commercial registering)
- 5.3 Strengthen the service system of Pattaya City continuously.
- 5.4 Develop the competency of Pattaya City personnel continuously, especially in the aspects of language capability, laws, checking and following up projects, environment / pollution, public relation, negotiation, and etc.

- 5.5 Develop and balance working life quality of the personnel of Pattaya City.
(Work life balance)
- 5.6 Develop the work follow-up and assessment mechanism of job performance focusing on the achievement together with the job management under good governance.
- 5.7 Strengthen data and statistics collecting process and the research for city administration and management.

The History of Pattaya City

The word “Pattaya” has a background history told that two months before the fall of the former capital, Ayudhaya, Phraya Tark (Sin) was Praya Kampaengpet at that time considered that if Ayudhaya fought against Burmese army weakly, it would be defeated soon, so he decided to escape from the city to form the new troop. He collected 500 men moving from Wat Pichai Army Camp heading to the southeast. On his way, he and his men fought against Burmese soldiers pursuing his troop for four times. Then he arrived in Chonburi and took a rest in front of Wat Yai Indaram (the present name). Next, he moved towards Chantaburi and had a rest during the route at Barn Norng Pai (located behind the present Pattaya Police Station beside Sukumvit Road now), Naklua Sub-district, Banglamung District. The Royal Annals by Royal writing recorded that “By this time there was a local leader named Nai Klom trying to obstruct him. When the two met face to face, Nai Klom was impressed by Phraya Tark's dignified manner and his army's strict discipline. He surrendered without a fight and joined his force. Nai Klom and 10,000 men of his force went forward and took a rest at a place for a night and then moved to Jomtian and Tung Kai Tia, Sattahip.

The place the two armies confronted each other was later known as "Thap Phraya", which means the "the army of the Phraya". Later on, this place turned to be Pattaya, the name represented the wind blowing from the southwest to the northeast at the beginning of the rainy season.

Previously, Pattaya was a small fishing village until the 1960s. Then, during Vietnam War, American army officers began arriving at Pattaya on R&R (rest and relaxation). Pattaya was developed into a popular beach resort with rapid growth and great expansion. It attracts over 4 million visitors coming to Pattaya each year (Tourism Authority of Thailand News Room, 2010). Fishers' huts along the beach were replaced by resort hotels and retail stores, including Asia's largest beachfront shopping mall (Retail Asia Online, 2011), the Central Festival Pattaya Beach Mall and a hotel (Hilton) on Beach Road in central Pattaya.

Formerly, Pattaya was the sanitation unit as Naklua Sanitation founded in 1956 with the area only Naklua Sub-district and then expanded covering South Pattaya in 1994 with the total area of 22.2 km².

Because of the rapid growth of Pattaya becoming as one of the most famous tourist attractions among Thai and foreign tourists, the form of sanitation unit could not govern Pattaya properly, the government launched 1978 Pattaya City Administration Act. And this caused the abolition of Naklua Sanitation Unit and made Pattaya City has become the special local government unit similar to the metropolitan status. When 1997 Thai Constitution was active, it mandated that the local administrator and the local council were from election. This made 1978 Pattaya City Administration Act be terminated and the new 1999 Pattaya City Administration Act was launched and has been effective since 1999.

Potential of Pattaya City

Pattaya City belongs to special features that are different from any other city in many ways. This can be an advantage to facilitate the adoption of a key factor to develop the local economic, social and political management. This highlights the potential advantages of the city as follows.

1. Pattaya is famous for its natural city known by both Thai and foreigners. The city also has the sandy beach with 15 kilometers long.
2. Pattaya is well-known as the hub of economic, banking, business and commercial services of the East Region.
3. Pattaya is well-known as the center of services and tourism business for the Eastern Coastal Area Development Project. (Eastern Seaboard)
4. Pattaya is the center of regional transportation and telecommunication.
5. Pattaya is the center of all educational level.
6. Pattaya is well-known as a city with a rich infrastructure favorable to the production of investment and tourism.
7. Pattaya is well-known as a city with efficiency towards wastewater treatment plant and garbage disposal.

8. Pattaya is well-known as the city of which its public services can be a good leader model, along the transparency and people participation.

9. Pattaya is well-known as the city center for domestic and international land and water sports events.

General Information of Pattaya City

Physical Features

◇ Location

Pattaya City is located at 171 Moo 6, North Pattaya Road, Naklua, Banglamung District, Chonburi Province 20150 in the eastern part of Thailand at the latitude of 13 Northern Degree and the longitude of 101 Eastern Degree in Banlamung District, Chonburi Province. It is approximately 150 kilometers far from Bangkok.

◇ Boundary

The north. It begins from Katinglai Canal close to the border of Banglamung Municipality and the border of Norng Pla Lai Municipality.

The south. The border of this direction is closed to the border of Huay-Yai Municipality and Na Chom Tain Municipality.

The east. The border is parallel along Sukumvit Road (900 meters far from Sukumvit Road to the east)

The west. The border is parallel along the sea of the Gulf of Thailand.

◇ Area

The whole area of Pattaya City is 208.10 square kilometers (130,062.50 Rai). The area is separated into three parts as follows:

- Land (including Koa Larn) 53.44 km² (33,400 Rai)
- Marine area 154.66 km² (96,662.50 Rai)
- Koa Larn 4.07 km² (2,543.75 Rai)

The area of Pattaya City comprises of 4 sub-districts as follows:

1. Naklua Sub-district with Moo 1, 2, 3, 4, 5, 6 and 7 (Koa Larn)
2. Norngprue Sub-district with Moo 5, 6, 9, 10, 11, 12 and 13
3. Huay-Yai Sub-district with Moo 4 (some parts)

4. Nong Pla Lai Sub-district with Moo 6, 7, and 8 (some parts)

Pattaya Beach is 15 kilometers long running along the coast.

Physical Geography of Pattaya City

Pattaya City is situated in Banglamung District and most of the area occupies Nongprue Sub-district and Naklua Sub-district including some parts of Huay-Yai Sub-district and Nong Pla Lai Sub-district.

The feature of the land is a slope land with a small plain area. The most important part of the plain area is the location of commercial and trading center. The resident area is next to the north of Pattaya Beach surrounded with small hill with the height of 35 meters at the middle sea level. Most of the plain area is in Naklua Sub-district which is the location of community center. The below plain area is along the beach 1 kilometer far from the sea shore. Accordingly, the small slope hill and the plain area features cause small natural water ways that is sometimes dry in summer. Besides, there are some parts of the areas under being governed by Pattaya City, namely Koa Larn, Koa Krok and Koa Sark which are about 8 kilometers far from the shore.

Ecological Feature

The ecological feature of the area of Pattaya City comprises of types of stones can be described as followed:

1. Alluvium and river gravel. This area was formed by soil and gravel left by flowing water ways by the time of Quaternary until the present time. This area is found in the north of Pattaya City area.

2. Granite and Granodiorite. This is igneous rock formed in the time of Triassic that is generally found near the coast.

3. Granite. This is also igneous rock found in the time of Carboniferous found in the west of Pattaya City lying along Sukumvit Road.

Climate

The Climate in Pattaya City is influenced by two types of monsoon regularly blowing in two seasons, namely, Northeast Monsoon blowing covering the area in the cool season beginning from the middle of October to February bringing the cool wind and moderate waves and Southwest Monsoon blowing covering the area during the rainy season from the middle of May to the middle of October bringing much rain, strong wind and big waves.

Seasons. The season is separated into 3 seasons according to the climate condition in Thailand as follows:

1. Cool Season. This season begins from the middle of October to the middle of February influenced by the air pressure that is cold and dry from China. However, Pattaya City is located at the lower latitude far from the center of high air pressure, and the location of Pattaya City is also near the sea coast, so this makes the cold weather decline.

2. Summer. This season begins when the Northeast Monsoon finishes beginning from the middle of February to the middle of May with the wind from the south and northeastern regularly blowing covering the area. Nevertheless, the weather in Pattaya City is not too hot as there is the wind from the sea blowing to reduce the heat, but there is a strong wind and big waves in the afternoon and in the evening.

3. Rainy Season. This season begins from the middle of May to the middle of October by the time of the southwest blowing covering Thailand bringing the damp from the Andaman Sea to the Gulf of Thailand. In the beginning of the season, there is a thunder storm and this declines in June. There is much rain during August, September and October and it is obvious that the reduction of the rain is in November and this signals that the rainy season ends.

Temperature. The climate in Pattaya City does not change so much because it is located on the seacoast in the eastern part of Thailand. The highest temperature was 37.3 °C recorded on 17 March 1991 and the lowest temperature was 14.6 °C recorded on 24 December 1999. The area that has the least amount of rain, below 1,200 m.m. of Pattaya City is the area of Banglamung District.

In 2018 the average highest temperature was 38.70 Degree Celsius (October 2018) and the average lowest temperature was 20.10 Degree Celsius (January 2018). The average highest relative humidity was 84.23% (May 2018) and the average lowest relative humidity was 74.75% (December 2018). The average highest rainfall was 252.00 mm. (September 2018) and the average lowest rainfall was 13.10 mm. (December 2018).

Source: Chonburi Meteorology Station (Pattaya)

January 2019

The Monthly Record of Rainfall, Temperature and Relative Humidity in 2018

Month	Total Rainfall	Number of days of the rainfall	Temperature (Celsius)		Relative Humidity (%)
	(Millimeter)		Lowest	Highest	Average
January	33.0	5	20.10	33.20	80.37
February	37.50	3	21.00	32.50	78.53
March	51.00	7	22.40	33.50	80.56
April	185.40	9	21.60	34.10	81.78
May	38.10	10	24.00	34.00	84.23
June	89.10	11	23.50	33.80	77.31
July	64.40	10	24.10	32.80	75.10
August	76.30	14	24.00	32.00	79.23
September	252.00	17	23.00	33.00	83.26
October	226.60	19	23.50	38.70	82.71
November	96.80	9	23.00	34.60	75.40
December	13.10	6	24.00	35.00	74.75
Total	1,163.30	120	Average 22.85	Average 33.93	Average 79.43

Source : Chonburi Meteorology Station (Pattaya)

January 2019

Infrastructure Aspect

Infrastructure Aspect

1. Transportation System

There are 388 roads in Pattaya City area as follows:

- | | |
|------------------------|-----|
| - Macadamized Road | 25 |
| - Concrete Road | 362 |
| - Fly Over Walking Way | 8 |

Source : Maintenance Section, Bureau of Public works,Pattaya City

February 2019

Intercity Transportation

As Pattaya City is an important tourist attraction of the eastern part and the country, the way to transport from other places to Pattaya City must be done conveniently and rapidly. The important transportations are as follows:

1.1 Automobile Transportation

Pattaya City can be easily accessed from Bangkok within 2 hours. The most convenient route to Pattaya City is Motorway No. 7 heading to Pattaya City from Suwanabhumi Airport within 1 hour and 30 minutes' drive. Moreover, Sukumvit Road (National Highway No. 3) lining along the eastern seacoast is the main road to North Pattaya at the kilometer post 145 – 146 and South Pattaya at the kilometer post 147. Sukumvit Road is also the important main road to link other cities with Pattaya City. Hence, Pattaya City is the center to travel to other cities in the eastern part of Thailand by car conveniently.

There are important national highways linking to Pattaya City as follows:

- **Special National Road No. 7 or New Bangkok – Chonburi Highway.** A special highway begins from Srinakarin Road (Bangkok) passing Bangpakong District, Chachoengsao Province to Chonburi Province meeting highway no. 36 at Banpong, northeast of Pattaya City. The approximate length of this highway is 141 kilometers.

- **National Road No. 3 or Sukumvit Road.** It is the important transportation route which is the first national road of the eastern part of the country passing Muang Chonburi District, Sriracha District, Banglamung District, Pattaya City and Sattahip District heading to Rayong Province. The approximate distance from Bangkok to Pattaya City is 147 kilometers.

- **National Road No. 36.** It is the road that separates from Special National Road No. 3 (Sukumvit Road) at Banglamung District, Chonburi Province and it once meet National Road No. 3 at Muang District, Rayong Province. The distance to Rayong Province is 55 kilometers.

- **National Road No. 3240.** It is the route that separates from National Road No. 3 at Banglamung District northeast of Pattaya City crossing National Road No. 36 and come to meet National Road No. 331. The distance is 17 kilometers.

Besides the mentioned national roads, there are 9 local roads linking others towns with Banglamung District with the distance of 61.632 kilometers as follows:

- Local Road Route Chor Bor 1008 separates from National Road No. 3 (Sukumvit) at Km. 160.500 Barn Chark-ngaew passing Banglamung District and Sattahip District with the distance of 9.8 kilometers.

- Local Road Route Chor Bor 1015 separate from Special National Road No. 7 at Km. 38.050 Barnpongsaked passing the area of Banglamung District with the distance of 10.104 kilometers.

- Local Road Route Chor Bor 1063 separates from National Road No. 3 (Sukumvit Road) at Km. 1058.450 Barnpongsaked passing the area of Banglamung District and Sattahip District with the distance of 5.708 kilometers.

- Local Road Route Chor Bor 2029 separates from National Road No. 36 at Km.2.650 Barnnorngkatenoj passing the area of Banglamung District with the distance of 4.345 kilometers.

- Local Road Route Chor Bor 3002 separates from National Road No. 36 at Km. 124.600 Wat Yarnasungwararam Maharwiharn passing the area of Banglamung District with the distance of 7.298 kilometers.

- Local Road Route Chor Bor 3065 separates from National Road No. 331 at Km. 102.800 Barnpoosai passing the area of Banglamung District with the distance of 5.470 kilometers.

- Local Road Route Chor Bor 5001 Wat Yarnasungwararam Maharwiharn passing the area of Banglamung District with the distance of 6.622 kilometers.

- Local Road Route Chor Bor 5030 Barncharkpalboong – Barnsamnakyarng passing the area of Banglamung District with the distance of 5.285 kilometers.

- Local Road Route Chor Bor 5072 surrounds Kao Chee-oan and passes the area of Banglamung District and Sattahip District with the distance of 7.00 kilometers.

Another way to travel to Pattaya City is by air-conditioned buses which depart from Eastern Bus Terminal (Ekamai), Northeastern Bus Terminal (Morchit 2) and Southern Bus Terminal (Saitai). Buses depart from these bus terminals every 30 minutes. From Suwanabhumi Airport, tourists can also take a taxi or air-conditioned buses to Pattaya City.

Air Conditioned Bus Terminal

1. Soi Chaiyapuek Bus Terminal (Police Box). It is located at Nongprue Sub-district Banglamung District Chonburi 20150 Tel. 0-3823-1142 (Servicing with 70 minibus from Pattaya to Ekamai. The first trip is at 05.00 a.m. and the last trip is at 08.00 p.m.)

2. Rungruang Tour Bus Terminal. It is located on North Pattaya Road, Naklua Sub-district, Banglamung District Chonburi 20260 Tel. 0-3842-9877

3. Rungruang Bus Terminal Co., Ltd. (Pattaya – Suwanabhumi Airport). It is located on Tappaya Road Nongprue Sub-district, Banglamung District Chonburi 20150 Tel. 0-3825-0795, 08-6324-2389.

4. Nakornchai Air Bus Terminal. It is located on Sukumvit Road opposite the traffic light of Central Pattaya, Nongprue Sub-district, Banglamung District Chonburi 20150 Tel. 0-3842-7481, 0-3842-4871, Call Center 1624

5. 407 Pattana Bus Terminal. It is located near Muang Pattaya 5 School Sukumvit-Central Pattaya, Nongprue Sub-district, Banglamung District Chonburi 20150 Tel. 0-3842-1535.

6. Petprasert (Pet Tour) Bus Terminal. It is on Sukumvit Road opposite Boontaworn Shop, Nongprue Sub-district, Banglamung District Chonburi 20150 Tel. 0-3841-6099.

7. Nakhornchai Transportation Bus Terminal (Pattaya). It is on Sukumvit-Central Pattaya Road opposite Nakhornchai Air, Nongprue Sub-district, Banglamung District Chonburi 20150 Tel. 0-3841-5887.

8. Charn Tour Co., Ltd. Bus Terminal. It is on Sukumvit-Central Pattaya Road, Nongprue Sub-district, Banglamung District Chonburi 20150 Tel. 0-3871-6528.

9. Srimongkon Transportation Bus Terminal. It is at 245/82-83 Moo 9 Pattaya No. 3 Road, Nongprue Sub-district, Banglamung District Chonburi 20150 Tel. 0-3842-4085.

Bus Terminal and Boarding Point

➤ Bangkok

@ Morchit Bus Terminal 2

Location : On Kampaengpet 2 Road, Jatujak District

Ticket Box : No. 48 on the ground floor

Boarding Platform : Platform No. 78

Contact : 02-936-3509

@ Ekamai Bus Terminal

Location : On Sukunvit Road near Bangkok Planetarium and Ekamai BTS Station

Ticket Box : No. 32 – 33

Boarding Platform : Platform No. 1

Contact : 02-712-3928

@ New Southern Rout Bus Terminal

Location : On Boromratchachonani Road

Ticket Box : No. 81

Boarding Platform : Platform No. 46

Contact : 02-894-6363

@ Bangna Boarding Point

Location : On Bangna – Trad Road Km. 1 (before Central Bangna Shopping Center)

Contact : 02-747-4370

@ Suvarnabhumi Airport Boarding Point

Location : In the Airport Bus Terminal

Contact : 089-443-7748

➤ Pattaya City

@ Pattaya Bus Terminal

Location : On North Pattaya Road

Contact : 038 – 429 – 877

*** Information of Bus Routes ***

Bangkok – Pattaya City

Passengers can choose the way of travelling from Bangkok to Pattaya City at the Bus Terminals as follows:

1. Northern Bus Terminal (Morchit 2) – Pattaya Bus Terminal

Bus Route and Fare	1. From Morchit 2 through Motorway. 128 Baht 2. From Morchit 2 to Bangna – Trad - Buraphavitee (Flyover Toll-way). 119 Baht
Time Table	- Buses depart Morchit 2 every 30 – 40 minutes. - The first bus departs at 04.30 a.m. -The last bus departs at 10.00 p.m.
Tel.	02-936-3509

2. Eastern Bus Terminal (Ekamai) - Pattaya Bus Terminal

Bus Route and Fare	1. From Ekamai to Bangna – Trad - Buraphavitee (Flyover Toll-way). 119 Baht
Time Table	- Buses depart Morchit 2 every 30 – 40 minutes. - The first bus departs at 05.00 a.m. -The last bus departs at 11.00 p.m.
Tel.	02-712-3928

3. Southern Bus Terminal – Pattaya Bus Terminal

Bus Route and Fare	1. From New Sопuthern Bus Terminal to Bangna – Trad - Buraphavitee (Flyover Toll-way). 119 Baht
Time Table	08.00 a.m., 10.00 a.m., 12.00 a.m., 02.00 p.m., 04.00 p.m.
Tel.	02-894-6363

4. Bangna Boarding Point – Pattaya Bus Terminal

Bus Route and Fare	1. From New Soputhern Bus Terminal to Bangna – Trad - Buraphavitee (Flyover Toll-way). 119 Baht. (The bus from Ekamai Bus Terminal also stops here).
Time Table	- Buses depart from this point every 30 – 40 minutes. - The first bus departs at 05.30 a.m. - The last bus departs at 09.00 p.m.
Tel.	02-747-4370

Source : www.pattayabus.com

May 2019

Pattaya – Bangkok

Passengers can choose the way of travelling from Pattaya to Bangkok at the Bus Terminals as follows:

1. Pattaya Bus Terminal – Northern Bus Terminal (Morchit 2)

Bus Route and Fare	1. From Pattaya to Bangna – Trad - Buraphavitee (Flyover Toll-way) – Morchit 2. 128 Baht.
Time Table	- Buses depart from the terminal every 30 – 40 minutes. - The first bus departs at 04.30 a.m. -The last bus departs at 09.00 p.m.
Tel.	038-429-877

2. Pattaya Bus Terminal – Eastern Bus Terminal (Ekamai)

Bus Route and Fare	1. From Pattaya to Bangna – Trad - Buraphavitee (Flyover Toll-way) – Morchit 2. 119 Baht.
Time Table	- The bus departs from the terminal every 30 – 40 minutes. - The first bus departs at 04.30 a.m. -The last bus departs at 11.00 p.m. **Passengers can get off the bus before the destination at Homepro Bangplee Branch, the flyover walkway opposite Central Bangna, Udomsuk BTS Station, On-nuch. The passenger must inform the driver before leaving Pattaya Bus Terminal.**
Tel.	038-429-877

3. Pattaya Bus Terminal – New Southern Bus Terminal

Bus Route and Fare	1. From Pattaya to Bangna – Trad - Buraphavitee (Flyover Toll-way) – New Southern Bus Terminal. 119 Baht.
Time Table	08.00 a.m., 10.30 a.m., 01.00 p.m.
Tel.	038-429-877
Ao-udom boarding point	- The bus will stop at this point in case there are passengers waiting for it. 94 Baht
	06.20 a.m. / 09.20 a.m. / 3.20 p.m. / 6.20 p.m.
Tel	038-766-525

Source : www.pattayabus.com

May 2019

1.2 Travelling to Pattaya by Train

Travelling by train to Pattaya can be made on the route Chachoengsao – Sattahip that is along the eastern coast. The train leaves Chachoengsao Railway Station passing Chonburi Province, Pantong District, Muang Chonburi District, Sriracha District, and Banglamung District to the destination at Sattahip Port with the distance of 134 kilometers.

The trains that pass Pattaya City are Route No. 283; Bangkok – Plutaluang and Route No. 284 Plutaluang – Bangkok. The train operates from Monday to Friday. The details of the time table of the operation is as follows:

Time Table of the Train Operation

Route #	From / To	Depart from the Origin	Arriving Time	Distance
283 (Normal Train)	Bangkok – Plutaluang,	06.55 a.m.		
	Banglamung		10.25 a.m.	144
	Pattaya,		10.35 a.m.	155
	South Pattaya		10.40 a.m.	159
	Plutaluang		11.20 a.m.	184
284 (Normal Train)	Plutaluang – Bangkok	01.35 p.m.		
	South Pattaya		02.14 p.m.	25
	Pattaya		02.21 p.m.	29
	Banglamung		02.32 p.m.	40
	Bangkok		06.25 p.m.	184

Source : www.railway.co.th

March 2019

1.3 Travelling by Air

Travelling to Pattaya by air can be made by taking a plane landing at U-Tapoa International Airport which is in Sattahip, Chonburi and Bancharng Rayong. It is 45 kilometers far from Rayong Province and 190 kilometers from Bangkok.

U-Tapoa International Airport is capable of taking big planes like Boeing 747 or Air Bus A380. Because of being situated near Suwanabhumi International Airport, there are not many flights landing here. Most international flights are charter airplanes, especially from Russia.

At this moment U-Tapoa International Airport is opened for commercial flights and the airlines that use the service of this airport are Bangkok Airways, Thai Air Asia and Thai Lion Air taking passenger from U-Tapoa to other domestic airports and international airport depending on the schedule flights. Flight Timetable can be searched at www.utapoa.com

1.4 Marine Transportation

Most of marine transportation in Pattaya City area is for tourism which links within the country and outside the country as follows:

(1) Domestic Routes

There is the port of Pattaya City named “Balihai Cape” which is the port for passenger boats and tourism boats.

- **Pattaya City – Koa Larn.** There are boats for servicing at South Pattaya Port (Balihai Cape). The distance is 7 kilometers from the shore taking 45 minutes. There are also speed boats for servicing to other islands around Koa Larn taking only 15 minutes from South Pattaya Beach.

- **Pattaya City – Koa Pai.** There are boats for servicing at South Pattaya Port (Balihai Cape) servicing at South Pattaya Port (Balihai Cape) and at South Pattaya Beach. The distance from Pattaya City to Koa Pai and surrounding islands is 9.5 kilometers.

- **Pattaya City – Koa Sichang.** There are speed boats for servicing at at South Pattaya Port (Balihai Cape). The distance is 25 kilometers from Pattaya City.

- **Cruise Ship from Pattaya to Koa Samui.** This is serviced by Siritara Ocean Queen with 131 serviced rooms on board for 375 passengers. The total time travelling is 15 hours.

- **Pattaya - Hua Hin Ferry.** This is serviced by Royal Passenger Liner Co., Ltd. with Catamaran ship-type (a huge two-storey ship type with air conditioning). The distance is 113 kilometers from Pattaya City and taking 2 hours for travelling.

(2) International Routes

- **The route of Star Cruise.** There are 3 routes of this ship cruise travelling from Singapore to Lam Chabang Port A1, Siracha which belongs to a private owner for cargo ships as a main service. It is 21 kilometers far from Pattaya City and it takes only 15 minutes to travel to Pattaya City.

- **The route of Yacht.** There is a port for yachts at Ocean Marina Yacht Club which is the biggest yacht club in the east with the water area for 300 yachts and 200 yachts on the land. It is located on Sukumvit Road or a kilometer post of 157 km. Jomtian Beach, Sattahip. It takes only 10 minutes to travel to Pattaya City.

The information about marine transportation in Pattaya City presents that it is very convenient to travel to various islands in Chonburi Province and it is also for overseas ships and yachts. According to the location of Pattaya City and the increase of marine transportation, it is reasonable to expand the service of the ferry for tourism and to link with other regions. Moreover, there will be service stations for facilitating tourists with necessary convenience. This can also promote strong and sustain community economic towards tourism industry as the wish of the government.

The Network of Communication and Transportation Link

(1) By Air. Pattaya City has a link with U-Tapoa International Airport and Suwanabhumi International Airport as follows:

- U-Tapoa International Airport (Rayong – Pattaya). This airport can be accessed by National Road No. 36 and 331 with the distance of 45 kilometers from Pattaya City.
- Suwanabhumi International Airport. There are two ways to access this airport which are travelling on No. 7 Highway or by taking No. 389 bus (Suwanabhumi International Airport – Pattaya City). It is 110 kilometers from Pattaya City.

(2) By Road. Pattaya City has its network linking other towns or cities by main national roads. The main link of roads to Pattaya City is National Roads which are Bangkok – Chonburi – Pattaya travelling on No. 3 Road (Sukumvit Road), Special National Road No. 7 (Motroway), and other links with roads connecting to Pattaya City as National Road No. 3 (Sukumvit Road), National Road No. 36 and 331.

(3) By Train. Pattaya City can be accesses by train with Chachoengsao – Sattahip Route which is the railway along the eastern coast.

(4) By Water Ways. There are water ways to access Pattaya City both for tourism and commercial transportation. There is also a port for ships to link Pattaya City with Cha-am and Hua Hin and also Trad Province. The deep sea port is for transportation and trading with ASEAN and Songkhla Province. Laem Chabang Commercial Port is 21 Kilometers far from Pattaya City.

Transportation within the Combined City Plan

1) Road System.

(1) Class of Roads. The class of roads within Pattaya City is discriminate by 4 service types as follows:

- **Main roads, Expressways, and Freeways.** These kinds of roads are used to connect other towns or cities with a long distance passing towns and in – out towns. The condition of the traffic is high speed driving and crowded. The main road is linked by minor roads and with a long distance and controlled the access in and out. The roads within the combination city plan of Pattaya City are National Road No. 3 (Sukumvit Road), National Road No. 7, and National Road No. 36.

- **Main Roads.** These roads are used for linking main roads, and minor roads with various centers of the city. The conditions of these roads are with fast speed vehicles and long distance which are National Road No. 3240 (Naklua – Pattaya City), North Pattaya Road, Central Pattaya Road, South Pattaya Road, Teppasit Road, Pattaya 2 Road, Pattaya 3 Street, Jomtian Road, Pornprapanimit Road, Nern Plubwarn Road and Chaipayuek Street.

- **Minor Streets.** This kind of road is also called collecting and distributing the traffic. The main use of this kind of streets is for collecting and distributing the traffic from the main roads and minor roads. The condition of these streets are for low speed traffic because of being annoyed by the activities of both sides of the streets. These streets are Sawangfa Street, Pattaya 1 Street, Pattaya 3 Street and Chaipayuek Street.

- **Local Roads.** These roads are quite narrow with slow speed traffic and short distance leading to particular areas such as Soi, and Lane.

(2) Network Pattern Road

The network pattern road of combined city plan of Pattaya City is like a checker with the main road and major roads in the north as Sukumvit Road, Naklua – Pattaya Road, Pattaya 2 Road, and Pattaya 3 Road and there are also main roads in the east and in the west that spread out to Pattaya City like “Super Line” as the checker like North Pattaya Road, Central Pattaya Road, South Pattaya Road and Teppasit Road.

The condition of a network pattern road can be discriminated into two types that are the area on the west side of Sukumvit Road or the site of Pattaya City as the land of this site is beneficially used and there are more roads than the other sides of the city. Most roads are 10 – 20 meters wide with 2 – 4 traffic lanes and the structure of the road is systematic like a checker. The important roads near the west coast area of Sukumvit Road are Pattaya – Naklua Road, North Pattaya Road Central Pattaya Road, South Pattaya Road, Chalermprakiat Road,

Pattaya No.2 Road, Pattaya No. 1 Road, Poetisarn Road, Jomtian Road, and Teppasit Road. However, the roads in the east of Sukumvit Road are not systematic. These roads are National Road No. 3240, Pornprapanimit Road, Nernplabwarn Road, khaotalo Rd, and Boonsampan Road. Therefore, there will be the development of the system of these roads to be more systematic to support the rapid growth of the city.

Public Transportation System

Public Transportation System is not available in Pattaya City at this moment as there is no regular bus to service people, but for the mini bus and motorcycle. At this moment, there are 4 routes of mini bus to service people as follows:

Mini Bus Routes within the Combined City Plan

No	Route #	Direction	Fare (baht) All route	Distance (km)
1	4	Balihai Port – Banglamung	7 - 10	10
2	5	Charoenrat Village – Najomtian	7 - 22	28.8
3	6	Around Pattaya City	7 - 12	16
4	7	North Pattaya – Central Pattaya	8 - 23	23

**At present, the average fare for getting on and off is 10 baht and 20 baht for the whole route.

Source : Pattaya Cooperative Transportation

February 2019

Besides, travelling within Pattaya can be made by taking a mini bus (Sornng Taew) which goes circularly on the beach road (Pattaya No. 1 Road) and Pattaya No. 2 Road which are the main points for tourists to visit. Motorcycle-taxi and tricycles in many points can be taken to the desired destination and motorcycles and cars can be hired for using in Pattaya City area.

Beyond the road that lies along the beach and Pattaya No. 2 Road, there are various sources for tourists to visit as they are the locations of hotels, restaurants, shops and tourist attractions which tourists can access by walk as Pattaya No. 3 Road, North Pattaya Road, Central Pattaya and South Pattaya; well-known as “Walking Street” including Tappaya Road which links Pattaya Beach and Jomtian Beach.

Statistic Showing the Flow of Traffic from 2014 – 2018

Year	In traffic Highest average (a unit per day)	Out traffic Highest average (a unit per day)	Remarks
2014	283,030	294,426	- There is a high fluent traffic on normal days - A slight traffic jam can be found on holidays as there are many cars, but moveable.
2015	285,661	302,575	- There is a high fluent traffic on normal days - There are a lot of traffics and be able to move slowly on holidays. Traffic police are needed to manage the traffic.
2016	300,859	314,084	- There is a hard traffic on rush hours when schools open. -The traffic easily flow after rush hours. -There are a lot of traffics and hard to move on festivals and holidays.
2017	305,602	311,936	- There is a hard traffic on rush hours when schools open. - The traffic easily flow after rush hours. -There are a lot of traffics and hard to move on festivals and holidays.
2018	307,995	299,986	- There is a hard traffic on rush hours when schools open. - The traffic easily flow after rush hours. -There are a lot of traffics and hard to move on festivals and holidays.

Source : Traffic and Transport Section,Bureau of Public works,Pattaya City

April 2019

2. The Use of Land and Buildings

The Use of Land

According to the survey of the use of land for benefit in 2009, it can be categorized the types of using the land as follows:

Types of Using the Land	Amount of Area	
	Rai	%
Accommodation	14,423	12.47
Commercial	4,930	4.26
Industry and Warehouse	616	0.53
Educational Institution	636	0.55
Religious Institution	501	0.43
Government Office	610	0.53
Leisure and Entertainment	302	0.26
Road, Soi, and Lane	3,990	3.45
River, Canal, and Swamp	4,718	4.08
Agriculture and Free land	84,900	73.43
Total	115,626	100

Source : Last report of the study of the development of the Combined City Plan of Pattaya City

April 2010

1. The area of land used for accommodation is 14,423 Rai or 12.47% or coming at the 2nd post under the use for agriculture and free land. The area that is mostly used in Pattaya City is at both side of Pattaya – Naklua Road where the former local situated the settlement. The crowded area is the area along Tappaya Road and Sukumvit Road then the eastern side of Sukumvit Road in the area of Norngprue Muang Municipality by Nernplubwarn Road, Praparnimit Road and Kao Talo Road.

2. The area of land used for commercial is 4,930 Rai or 4.26%. The area which is the most crowded for industry and commercial purposes is from North Pattaya Road to South Pattaya Road, especially Pattaya No.1 Road and Pattaya No. 2 Road are the commercial points as there are hotels, accommodation, shops, restaurants and entertainments situated on both side of the roads. Besides, there are expansions of commercial centers along Sukumvit Road, Teppasit Road, and Najomtian Beach Road.

3. The area of land used for industry and warehouse is 616 Rai or 0.53% showing that the use of the land of this kind is less than accommodation and commercial purposes. It is not obvious for industrial use as most of them are along Sukumvit Road, National Road No. 36 and National Road No. 3240.

4. The area of land used for education is 636 Rai or 0.55%. Most educational institutions are along Sukumvit Road which is the main road of Pattaya City. Others in different places are with religion institutions.

5. The area of land used for religion institutions is approximately 501 Rai or 0.43% scattering along Sukumvit Road and in the original community.

6. The area of land used for government office is approximately 610 Rai or 0.53%. The government offices are local government offices and regional government offices scattering along Sukumvit Road, North Pattaya, Central Pattaya, South Pattaya, and National Road No. 3240.

7. The area of land used for leisure and entertainment is approximately 302 Rai or 0.26%. Pattaya City has few areas for leisure and entertainment, but it can be substituted by the area of the beach.

8. The area of land used for road, soi, and lane is around 3,990 Rai or 3.45% of all area. Most area is at the west side of the railway; Sukumvit Road, Pattaya – Naklua Road, North Pattaya Road, Central Pattaya Road, South Pattaya Road, Teppasit Road, Pattaya No.1 Road, Pattaya No.2 Road. At the east side of the railway are minor roads which are narrow; Norngplalai Road, Mabprachan Road, Pornprapanimit Road, Nernplubwarn Road and Sukumvit – Huay-yai Road.

9. River, canal and swamp cover 4,718 Rai or 4.08% of the area. There is no river within the combined city plan, but for canals of which the water flows from the east to the west. Most of the water resources are 2 reservoirs which are Marbprachun Reservoir and Chark-nork Reservoir. There is the canal of which the water flows passing Pattaya City to the sea, namely, Klong Naklua, Klong Nornprue, Huay Suapaew and Huay Yai.

10. The area of land used for agriculture and free land is around 84,900 Rai or 73.43% of the area. Most of this kind of land is in Pattaya City within the combined city plan abandoned as a free land. The area used for agriculture like planting rice, and tapioca is

scattering in the area of Norngplalai Sub-district, Pong Sub-district, Norngprue Sub-district, and Huay Yai Sub-district.

The Use of Buildings

1. There are 69,788 units of the accommodation covering the land of 8,148,369 m². There are 42,572 single houses, 1,071 single buildings, 9,486 townhouses, 6,723 one storey connected houses, 3,143 hotels, 1,617 unregistered buildings (flats, mansion), 262 condominiums, 476 floating houses, 5 port offices, and 215 other constructions.

2. There are 12,553 commercial buildings covering the area of 2,305,362 m². This takes the second place of the accommodation. There are 2,844 single houses, 1,209 single buildings, 542 townhouses, 2,048 lined rooms, 3,623 concrete house blocks, 1,962 hotels, 19 floating houses, 4 piers, and 123 other constructions.

3. There are 1,122 buildings of industries and warehouses covering the area of 377,120 m². There are 631 single houses, 314 single buildings, 13 townhouses, 104 one storey connected houses, 17 lined concrete buildings and 43 units of other kinds.

4. There are 610 buildings of educational institutions covering the area of 198,956 m². There are 442 single houses, 126 single buildings, 29 one storey connected houses, 8 lined concrete buildings and 5 units of other kinds.

5. There are 869 buildings of religion institutions covering the area of 113,520 m². There are 426 single houses, 138 single buildings, 4 townhouses, 5 one storey connected houses, 3 lined concrete buildings and 293 units of other kinds.

6. There are 623 buildings of government offices covering the area of 165,239 m². There are 456 single houses, 124 single buildings, 3 townhouses, 11 one storey connected houses, 20 lined concrete buildings and 9 units of other kinds.

7. There are 217 buildings for leisure covering the area of 127,507 m². There are 112 single houses, 40 single buildings, 4 townhouses, and 61 units of other kinds.

8. There are 3,035 buildings of other kinds covering the area of 527,355 m². There are 462 single houses, 1,998 single buildings, 13 one storey connected houses, 21 lined concrete buildings, 13 hotels, 40 units of unregistered buildings, 3 floating houses, 2 office buildings and 483 units of other kinds.

Source : City Plan Section, Mechanic Department, February 2019

Table Showing Numbers and Sizes of Buildings Covering Land, Classified by Types and Kinds in the 2007
Combined City Plan of Pattaya City

Type of Buildings	Numbers	Area Covered	Single Houses	Single Buildings	Townhouse	Connected Rooms	Connected Buildings	Hotel	Nonregistered Buildings	Registered Buildings	Floating Houses	Ports	Office Buildings	Others
Accommodation	69,788	8,148,369	42,572	1,071	9,486	6,723	4,218	3,143	1,617	262	476	5	-	215
Commercial	12,553	2,305,362	2,844	1,209	542	2,084	3,623	1,962	-	-	19	4	179	123
Industry and Warehouse	1,122	377,120	631	314	13	104	17	-	-	-	-	-	-	43
Education Institutions	610	198,956	442	126	-	29	8	-	-	-	-	-	-	5
Religious Places	869	113,520	426	138	4	5	3	-	-	-	-	-	-	293
Government Off.	623	165,239	456	124	3	11	20	-	-	-	-	-	-	9
Leisure	217	127,507	112	40	-	4	-	-	-	-	-	-	-	61
Others	3,035	527,355	462	1,998	-	13	21	13	40	-	-	-	-	483
Total	88,817	11,963,427	47,945	5,020	10,048	8,937	7,910	5,118	1,657	262	498	9	181	1,232

Source : The Last Study Report of the Assessment of Combined City Plan Development

April 2010

The Area Permitted for Construction in Pattaya City Area
Classified as the Objectives in 2008 – 2018

Year	Accommodation		Commercial		Hotel		Service and Transportation		Others		Total	
	Numbers	M ²	Numbers	M ²	Numbers	M ²	Numbers	M ²	Numbers	M ²	Numbers	M ²
2018	176	149,568	59	46,014	13	139,232	4	12,084	18	4,701	270	351,599
2017	227	232,168	69	61,565	11	59,186	9	40,458	13	1,899	329	395,276
2016	201	336,789	82	85,389	7	54,812	13	30,680	28	5,387	331	513,057
2015	257	521,390	81	284,563	8	100,081	7	21,456	34	9,816	387	937,306
2014	234	384,993	49	68,200	6	84,861	11	15,152	18	2,992	318	556,198
2013	259	462,394	101	193,835	10	40,333	-	-	18	9,267	388	705,829
2012	290	363,249	47	37,907	2	26,988	4	16,353	14	12,367	357	456,864
2011	407	444,520	89	126,728	3	13,132	21	17,067	15	7,081	535	608,528
2010	581	899,686	91	85,972	10	79,752	3	10,787	30	24,025	715	1,100,222
2009	499	705,815	81	140,811	8	140,811	-	-	28	20,792	616	920,954
2008	628	1,180,054	115	197,317	5	22,551	1	6,704	50	40,484	798	1,440,406
Total	3,759	5,680,626	864	1,328,301	83	761,739	73	170,741	266	138,811	5,044	7,986,239

Source : Bureau of Public works,Pattaya City

May 2019

3. Water Work

The office of provincial waterworks Pattaya Branch (Special Class) is at 26/1 Chaipornwitee Road, Moo 12, Nongprue Sub-district, Banglamung District, Chonburi Province. The telephone number is 038-222-624, Fax. 038-222-465.

Pattaya City uses the service of water work from Pattaya Provincial Water Work Office which take raw water from 3 reservoirs in Pattaya City area. The severe lack of water period was in April - July 2018 affecting the area of Huay Yai Sub-district.

Pattaya Provincial Water Work classifies the users of water work into 5 types that are accommodation and commercial building, condominium and hotel, government office and school, hospital and industry.

Quantity of Water Consumption in 2018 (1 January – 1 December 2018)

Details	No. of Users	Quantity of Water Used (M ³ per year)	%
1. Households and Commercial Buildings	70,655	1,617,261	66.97
2. Condominium and Hotels	2,576	655,853	27.16
3. Government Offices and Schools	257	81,046	3.36
4. Hospitals	238	28,440	1.18
5. Industries	104	32,086	1.33
Overall	73,830	2,414,686	100

Source : Pattaya Provincial Water Work Office (Special Class)

February 2019

4. Electricity

Pattaya Provincial Electricity Office is at 100 Moo 2, Pattaya – Naklua Road, Naklua Sub-district, Banglamung District, Chonburi Province. The telephone number is 038-222-085 Fax. 038-221-007. The responsibility to distribute the electric current in Pattaya City is as follows:

Details of Distributing Electric Current in Pattaya City

Station	Transformer		Total (MPV)	Load Highest Load (MW)
	size	number		
1. Banglamung	50	2	100	50.30
2. Jomtian	50	2	100	29.60
3. South Pattaya	50	2	100	50.60
4. South Pattaya 2	50	1	50	59.10
5. North Pattaya	50	2	100	47.60
6. North Pattaya 2	50	1	50	26.60
7. Kao Maikaew	50	1	50	34.50

The statistic of the use of electricity in Banglamung District in 2018 revealed that there were 162,319 electric users. When comparing to the statistic of the use of electricity in 2017 and 2018, it was found out that there were 11,223 electric users increasing or 6.91%.

Statistic of Electric Users

Types	December 2017		December 2018		Increase/Decrease	
	Number	%	Number	%	Number	%
1. Households (not over 150 units)	13,862	9.17	14,829	9.14	967	6.52
2. Households (over 150 units)	112,528	74.47	121,753	75.0 1	9,225	7.57
3. Small business	17,940	11.87	18,830	11.6 0	890	4.72
4. Medium business	1,410	0.93	1,256	0.77	116	9.23
5. Large business	44	0.03	46	0.03	2	4.34
6. Specific business	878	0.58	857	0.52	(-21)	(-2.4)
7. Gov. offices & non-profit org.	-	-	-	-	-	-
8. Pumping water for agriculture	-	-	-	-	-	-
9. Temporary electricity	4,703	3.11	4,748	2.93	45	0.94
Overall	151,096	100	162,319	100	11,223	6.91

- Numbers of households using electricity 162,319
- The service covers 100% of all service areas.
- Units of public electric lights 133

Source : Pattaya Provincial Electricity

February 2019

5. Communication and Telecommunication

1. Radio Stations. There are two radio stations that are Navy Radio Station at Pattaya located on Pratamnak Hill and the Radio of Thailand located at Soi Tonkrabok Mosque, Sukumvit Road, Km. 142+420 and other board-casting stations as Pattaya Station FM 88.25, Mix 88.5 FM 88.5 MHz. 89.5 Pattaya Radio FM 89.5 MHz, City Radio Pattaya FM 90.25 MHz, and Looktoong Number One FM 93.00 MHz.

2. Cable Television. There are 4 cable television stations which are STV, BTV, Jomtian Cable TV and Tipmanee Cable TV.

3. Post Office. There are 4 post offices as follows:

1. Pattaya Post Office, Soi Praisanee, South Pattaya
2. Jomtian Post Office, Opposite Four Region Floating Market
3. Banglamung Post Office, Sawarnghah puetararm Road, Naklua

4. Telephone

4.1 Numbers of Personal telephone	49,510	numbers
- Official section	397	numbers
- House	15,497	numbers
- Business	21,996	numbers
4.2 Public Telephone	192	numbers
4.3 Cable Station	87	stations

Source : Pattaya Telephone Service Office

February 2019

5. Telecommunication Center.

There is only one center at 124 Moo 10, South Pattaya Road, Norngprue Sub-district, Banglamung District, Chonburi Province 20150. The office hour is from 08.30 a.m. – 4.30 p.m. Tel. 033-004001-10, Fax. 033-004001 Ext. 4255

6. Local Mass Media

There are 15 copies of local newspapers.

- | | |
|--------------------|--------------------------|
| 6.1 Pattaya News | 6.9 Pattaya Post |
| 6.2 Eastern Media | 6.10 Pattaya Mail |
| 6.3 Na Na Leader | 6.11 Pattaya Dot Com |
| 6.4 Siam | 6.12 Pattaya Today |
| 6.5 Kaw Det | 6.13 Asaneedewa Hot News |
| 6.6 Pattaya Times | 6.14 FARANG |
| 6.7 Pattaya People | 6.15 Pattaya Press |
| 6.8 Pattaya Vision | |

7. Offices with radio network for communication in the area and closed area

No	Office	No	Office
7.1	Chonburi Danger Protection	7.14	Pattaya Water Work Office
7.2	Chonburi Provincial Office	7.15	Banglamung Cable
7.3	Banglamung District	7.16	Sopon Cable
7.4	Pattaya City	7.17	Pattaya Fisherman Association
7.5	Banglamung Danger Protection Volunteer	7.18	Banglamung Hospital
7.6	Pattaya Police Station	7.19	Bangkok – Pattaya Hospital
7.7	Banglamung Police Station	7.20	Pattaya Memorial Hospital
7.8	Pattaya Tourist Police	7.21	Tourism Authority of Thailand
7.9	Marine Police (Koa Loi)	7.22	Sattahip Navy Base
7.10	Pattaya Highway Police	7.23	Tipmanee Cable
7.11	Sawangboriboon Center	7.24	Nornprue Municipality
7.12	Pattaya Municipal Officer	7.25	Banglamung Electric Office
7.13	Pattaya Marine Office	7.26	Dongtarn Center

ECONOMIC ASPECT

◆ ECONOMIC ASPECT ◆

Pattaya City is a famous tourist attraction for both Thais and foreigners and it has been developed to be the main tourist attraction of the eastern part. Accordingly, most of economic activities based on tourism and services, so the majority of people or 90% do business along various forms trading and servicing tourists while others earn their living on agriculture, industry, fishing and trading.

Department of Community Development, Ministry of Interior reported in 2018 that the people in Chonburi Province obtained their incomes with the average of 189,330 baht/person/year

1. Industrialization

Tourism industry is the most important economic activity of Pattaya City. More than 90% of workers in industry areas are hired in tourism industry to work in hotels, resorts, bungalows, night clubs, entertainments, and restaurants. Fewer workers are hired to work in concrete factory, block concrete factory, concrete floor factory, door and window frame factory and tapioca grinding factory.

2. Agriculture

The agricultural area of Pattaya is at Huay Yai Sub-district and Norngplalai Sub-district with the plantation of tapioca, pineapples and coconut trees. Very few people earn their living on this as the price of the land is increasing sharply and it also makes agricultural investment declines.

3. Commercial and Services

There are various kinds of business done in Pattaya City as retailer, import and export, providing services to tourists like equipment for facility and entertainment for rent; motorcycle for rent, Jet Ski for rent, tour boat for rent, parachute sailing, and banana boat for rent. Besides, there are other business provided to tourists as follows:

Business	Amount
- Hotels	1,045
- Resorts	206
- Guest Houses	272

- Condominiums	347
- Housing Villages	211
- Bungalows	31
- Apartments, Mansions	641
- Banks, Bank Counters	551
- Gas Stations	23
- LPG Stations	17
- NGV Stations	2
- Department Stores/Super Markets	578
- Restaurants	2,383
- Entertainments	1,058
- Tourist Attractions	223

Source : Pattaya City Call Center (1337)

February 2019

15 Market Places in Pattaya City

There are many market places in Pattaya City, but they are divided into two groups as the market under the responsibility of Pattaya City and under the responsibility of private sectors as follows:

- The markets under the responsibility of Pattaya City:

1. Larnpoe Market

This market provides many kind of fresh seafood like shrimps, shells, crabs, fishes, and squids including cooking service for needs of people and many kind of dried seafood are also available at this market.

2. Naklua New Market

located at Sawangfah Road, Naklua, Banglamung District

This market provides many kinds of food and household material. There are two periods of opening time; morning from 05.00 a.m. – 10.00 a.m. and afternoon from 3.00 p.m. – 08.00 p.m. Ready cooked food and sweets are also available at this market.

- The markets under responsibility of private sectors:

- | | |
|-------------------------|----------------------------------|
| 1. Tony Bazar Village | 8. Sapon Market |
| 2. Amorn Nakhorn Market | 9. Lotus Market, Central Pattaya |
| 3. Poetisarn Market | 10. Keha Center Market |

- | | |
|--------------------------|------------------------------|
| 4. Peerapon Market | 11. Wilai Whole Night Market |
| 5. Wat Tamsamakee Market | 12. Rom Poe Market |
| 6. Top One Market | 13. Pattaya Bazar Market |
| 7. Bua Koaw Market | 14. Mini Siam Market |

Tourist Attractions, Fun Lands, Sports and Adventures in Pattaya City and Nearby

Pattaya City is a famous tourist attraction and well-known for people around the world. There are various tourist attractions of both natural and man-made places for tourists to visit as follows:

- | | |
|---|--------------------------------|
| 1. Monster Aquarium Pattaya | Tel. 085-1523715 |
| 2. Sanctuary of Truth (Wooden Castle) | Tel. 038-367229-30, 038-367815 |
| 3. Mini Siam | Tel. 038-727666, 038-727333 |
| 4. Marbprachun Reservoir | Tel. 038-733396, 038-249777 |
| 5. Chalermprakiat Park (Pratamnak) | Tel. 038-413902 |
| 6. Million Year Stones and Crocodile Farm | Tel. 038-249347-9 |
| 7. Wang Sarm Sian | Tel. 038-413902 |
| 8. Prince Chumporn Kateudomsak Statue | Tel. 038-413902 |
| 9. Under Water World Pattaya | Tel. 038-756876-9 |
| 10. Samkok Garden | Tel. 038-421428-9 |
| 11. Ripley's Museum | Tel. 038-710294-8 |
| 12. Sukhawadee House | Tel. 038-703184, 038-223454 |
| 13. Tuxedo Illusion Hall | Tel. 081-6421705 |
| 14. Teddy Bear Museum | Tel. 038-411285 |
| 15. Four-Region Floating Market | Tel. 038-706340, 038-076802 |
| 16. Art in Paradise | Tel. 038-424500, 038-424511 |
| 17. Suriya Music Art | Tel. 038-255568 |
| 18. Pipo Pony Club | Tel. 038-249555 |
| 19. Big Bee Farm | Tel. 038-172001-4 |
| 20. Pattaya Dolphin World | Tel. 038-051790-6, 061-8143939 |
| 21. World James Collection | Tel.038-412333 |
| 22. James Gallery Pattaya | Tel. 038-371222 |

23. Koloseum Show Pattaya Tel. 038-425939
24. Love Art Park Pattaya Tel. 038-237720
25. Amazing Art Pattaya Tel. 038-421156, 095-7543250
26. Ancient Chinese Community, Charn-ngaew Village Tel. 081-8703398
27. Frost Magical Ice of Siam Pattaya Tel. 038-111270, 063-6694559
28. Overturn House Tel. 092-5989019
29. Kaan Show (Floatable Theatre) Tel. 062-6942007-8
30. Carved Buddha Image on the Hill at Cheejun Hill
31. Yarnasangwararam Monastery Tel. 038-238369
32. Nongnuch Garden Pattaya Tel. 038-238158, 038-238061-2
33. Silver Lake Grape Garden Tel. 02-2616565
34. Mimosa Pattaya Tel. 038-237318-9
35. Pattaya Sheep Farm Tel. 092-3216718
36. Grada Farm Tel. 033-006218
37. Chee-oan : No Animal Hunting area Tel. 038-311234
38. Sunset Sweet Shell Farm Tel. 084-5307410
39. Thaitanee, Cultural and Art Village Tel. 038-119080
40. Magician House (Anakekusol Sala) Tel. 038-343555
41. Swiss Sheep Farm @Kao Cheejun Tel. 038-119095, 099-1234134
42. Koa and Talae Thai Natural Museum Tel. 038-432475, 038-432473
43. Percula Farm (Cartoon Fish) Tel. 081-3136324
44. Jakreenaruebet Royal Warship, Satahip Naval Base Tel. 038-438457
45. Similan Royal Warship, Satahip Naval Base Tel. 038-438457
46. Sea Tortoise Reservation Center, Satahip Naval Base Tel. 038-431318
47. Undersea Garden at Koa Kharm Tel. 038-432170
48. Toey-ngarm Beach (Tagun Bay) Tel. 038-334188
49. Saikaew Beach (Navy Academy) Tel. 038-136187
50. Narngam and Narngong Beach (Samaesarn Sattahip) Tel. 038-431261
51. Sor Beach, (Support Section, Department of Navy Weapon)
52. Koa Loi, Sriracha Tel. 038-321801
53. Koa Srichang, Sriracha Tel. 038-216224

54. Koa Kiew-Kao Chompoo Wild Animal Reservation, Bangpra, Srirach
Tel. 038-311234
55. Non-wild animal hunting Area, Banpra (Bird Watching Activity)
56. J-Park Sriracha Tel. 038-338444
57. Chantaten Waterfall (Bangpra, Sriracha) Tel. 038-341787
58. Space Inspirium Tel. 033-046300
59. Sriracha Tiger Zoo Tel. 038-296556-8
60. Kao Kiew Open Zoo Tel. 038-298195, 038-298189
61. Pattaya Elephant Village Tel. 038-249818, 038-249853
62. Elephant Camp and Monkey School Tel. 038-706312, 038-706272
63. Siam Elephant, Kratinglai Tel. 089-8334925
64. Thaitong Elephant Park Tel. 081-5757554
65. Snake Show, Pattaya Tel. 081-6240917
66. Tiffany Show Tel. 038-422170-2
67. Alcasar Cabaret Show, Pattaya Tel. 038-422220, 038-410224
68. Pattaya Park Fuuny Land Tel. 038-251201, 038-364110-2
69. Cartoon Network Water Park Amezone, Pattaya Tel. 038-237707
70. Ramayana Water Park Tel. 033-005929
71. Harbour Land, Pattaya Tel. 081-3770101
72. Pattaya Shooting & Adventure Park Tel. 038-907808
73. Pattaya Cart Speedway Tel. 038-422044
74. Supper Cart Racing Tel. 038-727410
75. Easy Cart Pattaya Tel. 038-711403-4
76. The Horse Shoe Point Club Tel. 038-735050-9
77. Mini Siam Kocart Tel. 038-727410, 038-421628
78. Suantai Pattaya Tel. 088-0998788
79. Legend Siam Tel. 033-073333
80. Pattaya Dophinarium Tel. 064-7788999
81. Marine Scientific Institute, Burapha University Tel. 038-391671

Pattaya Beach



Pattaya Beach, a semicircle like shape, is the tourist attraction of Pattaya City with the 3 kilometer road along the beach and varieties of plants suitable for relax. Besides, there are facilities available like equipment for land and water sports.

Pattaya Beach begins from North Pattaya (Dusit Thani Intersection) along the road to South Pattaya. This area is the crowded community with hotels, shops, restaurants, and nearly every kind of business located here including bear bars, night clubs, cabaret shows for tourists to see at night time.

Jomtien Beach



It is another place of Pattaya for tourists to relax by the beach. It is 6 kilometers from Pattaya and it is different from Pattaya Beach which arms by Pattaya Bay. There is a road along the beach with the length of 3 kilometers. A lot of both Thai and foreign tourists like Jomtian Beach as it is quiet and there is shade from the trees. Water sports are available here like water skiing, jet skiing, wind surfing, and banana boating. Besides, restaurants and seafood restaurants are also available here.

Wongprachan Beach

It is located in the north of Pattaya, Soi Wong Amart, with the length of 1 kilometer and with calmness and clear water.

Kratinglai Bay

It is the new beach that Pattaya city promotes it to be the natural tourist attraction by announcing it having no disturbance to tourists. This makes the beach quiet and calm suitable for relaxing. There is the arrangement of the garden by planting trees and making seats for relax and exercise. The beach is 900 meters long and 30 meters wide.

Chalermpraiat Garden Pattya

Pattaya City has made the garden at the foot of Pattaya Hill (Pratamnak Road) to honor King Rama IX on 5 December 1988 when the king was 60 years old. The area of this garden is 15 Rai for relax and exercise.

Pattaya Hill (Kao Prabart)

The beauty of Pattaya Beach is not only seen on the land, but it can be seen more beautifully from the top of Pattaya Hill. All views of Pattaya can be seen from this point. There is a must for all tourists to visit this place and look at the semicircle shape of Pattaya Beach. Besides, Buddhists can pay respect to the sacred Buddha Image and the birth date Buddha image for luck. This place is also the location of Navy Radio and the statue of Prince Chumporn Kateudomsak who are still worshipped by nearly every navy soldier.

Sports Tour Activities

Pattaya City realizes the important of sports that can bring the fame and economical revenues for both Pattaya City and the country, so that Pattaya City supports and organizes activities for famous sports as follows:

- Thailand Windsurf Tournament (Competition 1 and 2)
The time of the event : Competition 1 : every January of each year
Competition 2 : every April of each year
Place : Jomtian Beach, Pattaya City
- Honda LPGA Thailand
The time of the event : Around every February
Place : Siam Country Club Golf Course, Pattaya City
- Mountain Bike Cross Country of Pattaya City
The time of the event : every April
Place : Pratamnak Hill, Pattaya City
- International Sailing Competition
The time of the event : the end of April – the beginning of May
Place : Ocean Marina Yacht Club
- Pattaya Tri Sports
The time of the event : the third Sunday of May
Place : Along Pattaya Beach Road
- Pattaya Marathon
The time of the event : Around July of every year
Place : Along Pattaya Beach Road
- International Male Beach Football Competition
The time of the event : every December
Place : Jomtian Beach, Pattaya City
- Jet Ski World Cup
The time of the event : every December
Place : Jomtian Beach, Pattaya City

Number of Foreign Tourists and Incomes from Tourists from January to December 2018

Country of Nationality	Numbers in 2018P		Change%	Country of Nationality	Income in 2018R (M฿)		Change%
	Jan - Dec	Jan - Dec	Jan - Dec		Jan - Dec	Jan - Dec	Jan - Dec
East Asia	26,064,292	23,846,387	+9.30	East Asia	1,143,255.00	1,024,238.70	+11.62
ASEAN	10,284,050	9,322,508	+10.31	ASEAN	331,958.51	299,045.14	+11.01
Brunei	14,243	14,268	-0.18	Brunei	783.39	904.77	-13.42
Cambodia	882,015	840,871	+4.89	Cambodia	32,963.83	31,205.17	+5.64
Indonesia	644,043	576,110	+11.79	Indonesia	20,398.92	18,489.23	+10.33
Laos	1,750,658	1,682,087	+4.08	Laos	53,028.45	50,135.28	+5.77
Malaysia	4,097,604	3,494,488	+17.26	Malaysia	114,896.81	95,410.08	+20.42
Myanmar	368,170	365,606	+0.70	Myanmar	16,857.60	16,462.05	+2.40
Philippines	432,578	381,252	+13.46	Philippines	16,162.27	13,301.43	+21.51
Singapore	1,067,309	1,032,647	+3.36	Singapore	43,447.13	43,482.36	-0.08
Vietnam	1,027,430	935,179	+9.86	Vietnam	33,420.11	29,654.77	+12.70
China	10,535,955	9,806,260	+7.44	China	580,699.23	520,722.40	+11.52
Hong Kong	1,015,688	821,064	+23.70	Hong Kong	42,485.18	32,917.30	+29.07
Japan	1,656,100	1,544,442	+7.23	Japan	72,683.45	66,679.99	+9.00
Korea	1,796,596	1,709,265	+5.11	Korea	80,396.15	75,506.73	+6.48
Taiwan	687,701	573,077	+20.00	Taiwan	30,397.19	24,936.34	+21.90
Others	88,202	69,771	+23.42	Others	4,635.29	4,430.80	+4.62
Europe	6,765,326	6,514,011	+3.86	Europe	502,462.28	464,602.99	+8.15
Austria	116,779	104,784	+11.45	Austria	9,096.53	7,983.12	+13.95
Belgium	114,298	112,266	+1.81	Belgium	7,917.01	7,679.13	+3.10
Denmark	169,374	161,920	+4.60	Denmark	15,015.37	13,695.14	+9.64
Finland	140,970	140,464	+0.36	Finland	11,967.07	12,114.18	-1.21
France	749,643	740,190	+1.28	France	47,939.47	46,510.24	+3.07
Germany	889,777	850,139	+4.66	Germany	57,643.75	53,225.05	+8.30
Italy	280,161	264,515	+5.91	Italy	17,779.01	15,849.25	+12.18
Netherlands	236,300	222,409	+6.25	Netherlands	17,516.33	15,770.22	+11.07
Norway	128,856	127,850	+0.79	Norway	11,457.59	11,212.93	+2.18
Russia	1,472,949	1,346,338	+9.40	Russia	115,711.01	102,657.51	+12.72
Spain	181,915	179,584	+1.30	Spain	11,842.24	11,547.32	+2.55
Sweden	311,959	323,736	-3.64	Sweden	27,270.30	27,642.23	-1.35
Switzerland	207,596	209,528	-0.92	Switzerland	17,508.28	17,702.60	-1.10
United Kingdom	987,456	994,755	-0.73	United Kingdom	77,820.83	73,992.49	+5.17
East Europe	522,975	479,756	+9.01	East Europe	36,873.62	29,866.87	+23.46
Others	254,318	255,777	-0.57	Others	19,103.87	17,154.71	+11.36
The Americas	1,600,897	1,541,950	+3.82	The Americas	120,305.32	109,604.11	+9.76
Argentina	44,049	63,004	-30.09	Argentina	3,297.00	4,624.48	-28.71
Brazil	66,087	78,186	-15.47	Brazil	5,021.71	5,609.38	-10.48
Canada	275,543	258,494	+6.98	Canada	21,990.15	18,850.43	+16.66
USA	1,123,248	1,056,423	+6.33	USA	83,360.30	74,307.22	+12.18
Others	90,970	85,843	+5.97	Others	6,636.16	6,212.60	+6.82
South Asia	1,983,252	1,773,564	+11.82	South Asia	85,386.12	75,195.47	+13.55
Bangladesh	129,589	121,765	+6.43	Bangladesh	6,453.77	6,563.07	-1.67
India	1,596,772	1,415,197	+12.83	India	66,005.25	56,634.64	+16.55

Nepal	55,047	43,251	+27.27	Nepal	2,886.96	2,294.39	+25.83
Pakistan	84,960	81,854	+3.79	Pakistan	4,628.86	4,390.67	+5.42
Sri Lanka	64,762	63,267	+2.36	Sri Lanka	2,827.26	2,779.52	+1.72
Others	52,122	48,230	+8.07	Others	2,584.03	2,533.18	+2.01
Oceania	922,520	938,894	-7.74	Oceania	73,253.71	73,908.31	-0.89
Australia	801,637	817,218	-1.91	Australia	64,790.60	65,776.41	-1.50
New Zealand	116,835	117,962	-0.96	New Zealand	8,028.32	7,541.65	+6.45
Others	4,048	3,714	+8.99	Others	434.81	590.25	-26.33
Middle East	739,494	789,939	-6.39	Middle East	64,389.89	69,344.05	-7.14
Egypt	24,062	24,100	-0.16	Egypt	1,700.53	1,516.78	+22.11
Israel	188,739	173,673	+7.49	Israel	17,762.20	16,612.55	+ 6.92
Kuwait	74,665	72,244	+3.35	Kuwait	7,807.66	8,366.26	-6.68
Saudi Arabia	28,334	33,531	-15.50	Saudi Arabia	2,746.45	3,510.49	-21.76
U.A.E.	128,271	137,218	-6.52	U.A.E.	12,025.71	10,077.55	-0.43
Others	295,369	349,173	-15.41	Others	22,347.34	27,260.42	-18.02
Africa	201,519	187,233	+7.63	Africa	14,784.81	14,211.37	+4.04
S. Africa	102,713	93,313	+10.07	S. Africa	7,584.02	6,820.22	+11.20
Others	98,806	93,920	+5.20	Others	7,200.79	7,391.15	-2.58
Grand Total	38,277,300	35,591,978	+7.54	Grand Total	2,003,837.13	1,831,105.00	+9.43

Remark : P means fundamental data and R means improving data of France, India, Canada, Saudi Arabia and United Arab Emirates.

Source : Tourism and Sport Economic Section, : www.mots.go.th

18 January 2019

Ministry of Tourism and Sports, Thailand

Guest Arrivals at Accommodation Establishment : Pattaya Chonburi : January – December 2017

Nationality	January - December		2017/16
	2017	2016	%Change
Thai	4,510,062	4,168,378	+8.20
Brunei	5,735	4,990	+14.93
Cambodia	6,850	5,475	+25.11
Indonesia	73,680	68,120	+8.16
Laos	4,796	3,614	+32.71
Malaysia	78,919	62,194	+26.89
Myanmar	7,072	4,579	+53.46
Philippines	28,033	23,208	+20.79
Singapore	52,357	39,846	+31.34
Vietnam	231,958	172,408	+34.54
China	2,571,897	2,540,822	+1.22
Hong Kong	204,681	166,870	+22.66
Japan	221,490	193,246	+14.62
Korea	618,977	607,637	+1.87
Taiwan	339,544	283,825	+19.63
Austria	78,042	61,410	+27.08
Belgium	47,471	38,274	+24.03
Denmark	65,033	55,536	+17.10
Finland	61,348	66,941	-8.36
France	111,210	103,410	+7.54
Germany	375,680	387,875	-3.14
Italy	98,558	79,982	+23.23
Netherlands	109,323	96,177	+13.67
Norway	85,624	71,649	+19.50
Russia	1,043,704	821,662	+27.02
Spain	13,610	9,638	+41.21
Sweden	103,871	97,073	+7.00
Switzerland	82,169	70,415	+16.69
United Kingdom	329,813	354,937	-7.08
East Europe	216,091	218,783	-1.23
Canada	44,448	42,956	+3.47
USA	163,634	171,750	-4.73
India	630,745	427,515	+24.15
Australia	140,628	154,383	-8.91
New Zealand	19,269	16,485	+16.89
Middle East	403,133	364,854	+10.49
Israel	45,527	44,718	+1.81
Africa	22,126	19,544	+13.21
Others	128,363	163,573	-21.53
Grand Total	13,275,426	12,284,770	+8.06
Thai	4,510,062	4,163,378	+8.20
Foreigners	8,765,364	8,116,392	+8.00

Source : Ministry of Tourism and Sports, www.mots.go.th

May 2019

Ministry of Tourism and Sports, Thailand

Statistic of Guest Arrivals at Accommodation Establishment : Pattaya, Chonburi : April – June 2018 (Second period)

Nationality April - June	2018			Q2		2018/17
	Apr	May	June	2018	2017	% Change
Thai	388,347	458,448	441,632	1,288,427	1,220,586	+5.56
Brunei	92	67	85	244	192	+27.08
Cambodia	34	49	32	115	86	+33.72
Indonesia	6,571	5,728	5,413	17,712	12,727	+39.17
Laos	473	590	356	1,419	1,094	+29.71
Malaysia	7,656	8,143	6,843	22,642	22,081	+2.54
Myanmar	728	1,062	637	2,427	1,902	+27.60
Philippines	2,856	3,174	3,051	9,081	7,246	+9
Singapore	5,471	5,248	4,987	15,706	12,431	+26.35
Vietnam	17,529	16,457	12,043	46,029	33,307	+38.20
China	259,012	271,731	210,037	740,780	670,893	+10.42
Hong Kong	23,546	13,847	13,485	50,878	53,841	-5.50
Japan	17,275	20,819	18,531	57,625	64,901	-11.21
Korea	75,014	60,453	54,284	189,751	160,311	+18.36
Taiwan	37,523	33,997	31,335	102,855	96,064	+7.07
Austria	6,286	5,432	4,952	16,670	13,449	+23.95
Belgium	4,715	5,204	3,478	13,397	9,885	+35.53
Denmark	7,986	7,495	7,053	22,534	16,594	+35.80
Finland	4,456	4,501	3,975	12,932	11,322	+14.22
France	10,540	10,916	9,467	30,923	29,094	+6.29
Germany	43,734	32,470	28,154	104,358	96,243	+8.43
Italy	11,058	6,549	5,985	23,592	18,554	+27.15
Netherlands	11,453	11,123	10,347	32,923	30,193	+9.04
Norway	10,390	7,348	9,281	27,019	25,890	+4.36
Russia	117,812	70,412	65,493	253,717	238,427	+6.41
Spain	1,536	824	1,170	3,530	3,007	+17.39
Sweden	10,377	9,548	9,032	28,957	28,732	+0.78
Switzerland	8,958	9,097	6,546	24,601	23,522	+4.59
United Kingdom	41,543	25,708	20,761	88,012	98,688	-10.82
East Europe	20,938	10,984	14,012	45,934	43,535	+5.51
Canada	4,766	4,521	4,738	14,025	12,169	+15.25
USA	14,085	15,287	13,180	42,552	42,931	-0.88
India	58,953	76,325	52,467	187,745	157,779	+18.99
Australia	13,228	14,851	10,779	38,858	45,083	-13.81
New Zealand	2,107	1,685	1,164	4,956	5,129	-3.37
Middle East	40,776	32,546	36,753	110,075	104,651	+5.18
Israel	5,182	3,328	4,903	13,413	12,007	+11.06
Africa	2,310	1,153	1,816	5,279	5,584	-5.46
Others	18,732	17,294	16,487	52,513	71,198	-26.24
Grand Total	1,314,527	1,286,042	1,146,18	3,746,749	3,506,383	+6.86
Thai	388,347	458,448	441,632	1,288,427	1,220,586	+5.56
Foreigners	926,180	827,594	704,548	2,458,322	2,285,797	+7.55

Source : Ministry of Tourism and Sports, : www.mots.go.th, May 2019

Statistic of Tourists Visiting Pattaya (Chonburi) 2017

	January-December		
	2017	2016	% Change
Visitor	14,680,669	13,696,297	+ 7.19
Thai	5,543,633	5,183,955	+ 6.94
Foreigners	9,137,036	8,512,342	+ 7.34
Tourist	13,638,542	12,701,098	+ 7.38
Thai	4,675,555	4,355,143	+ 7.36
Foreigners	8,962,987	8,345,955	+ 7.39
Excursionist	1,042,127	995,199	+ 4.72
Thai	868,078	828,812	+ 4.74
Foreigners	174,049	166,387	+ 4.60
Average Length of Stay (Day)*	3.53	3.51	+ 0.02
Thai	2.39	2.43	- 0.04
Foreigners	4.13	4.08	+ 0.05
Average Expenditure (Baht/Person/Day)			
Visitor	4,698.280	4,342,32	+ 8.20
Thai	3,408.950	3,230.37	+ 5.53
Foreigners	5,115.770	4,713.15	+ 8.54
Tourist	4,760.030	4,342.32	+ 8.20
Thai	3,541.010	3,230.37	+ 5.53
Foreigners	5,128.030	4,713.15	+ 8.53
Excursionist	1,842.210	1,737,32	+ 6.04
Thai	1,708.850	1,622.68	+ 5.31
Foreigners	2,507.440	2,308.42	+ 8.62
Revenue (Million Baht)			
Visitor	231,313.97	198,138.64	+ 16.74
Thai	41,052.78	36,846.48	+ 11.36
Foreigners	190,261.19	161,274.16	+ 17.97
ACCOMMODATION ESTABLISHMENTS			
Rooms* (Number)	63,445,	58,848	+7.18
Occupancy Rate (%)*	77.91	75.92	+ 1.99
Number of Guest Arrivals	13,275,426	12,284,770	+ 8.06
Thai	4,510,062	4,168,378	+ 8.20
Foreigners	8,765,364	8,116,392	+ 8.00

Remark : * The numbers of the rooms covering all kind of all-over night staying places.

Source : Ministry of Tourism and Sports : www.mots.go.th

Announced on 16 November 2018

Statistic of Tourists Visiting Pattaya (Chonburi) 2018, Second Period (April – June 2018)

	April - June		
	2018	2017	% Change
Visitor	4,111,788	3,849,869	+ 6.80
Thai	1,600,716	1,514,350	+ 5.70
Foreigners	2,511,072	2,335,519	+ 7.52
Tourist	3,810,130	3,568,011	+ 6.79
Thai	1,339,568	1,269,885	+ 5.49
Foreigners	2,470,562	2,298,126	+ 7.50
Excursionist	301,658	281,858	+ 7.02
Thai	261,148	244,465	+ 6.82
Foreigners	40,510	37,393	+ 8.34
Average Length of Stay (Day)	3.25	3.30	- 0.05
Thai	2.27	2.35	- 0.08
Foreigners	3.78	3.82	- 0.04
Average Expenditure (Baht/Person/Day)			
Visitor	5,482.38	5,116.28	+ 7.16
Thai	3,697.33	3,516.46	+ 5.14
Foreigners	6,111.05	5,701.79	+ 7.18
Tourist	5,571.06	5,116.28	+ 7.20
Thai	3,867.01	3,516.46	+ 5.38
Foreigners	6,126.16	5,701.79	+ 7.18
Excursionist	1,841.60	1,753.08	+ 5.05
Thai	1,719.90	1,644.88	+ 4.56
Foreigners	2,626.21	2,460.56	+ 6.73
Revenue (Million Baht)			
Visitor	69,524.95	61,621.58	+ 12.83
Thai	12,208.02	11,353.40	+ 7.53
Foreigners	57,316.93	50,268.18	+ 14.02
ACCOMMODATION ESTABLISHMENTS			
Rooms *	62,889	63,445	- 0.88
Occupancy Rate (%)	80.87	77.16	+ 3.71
Number of Guest Arrivals	3,746,749	3,506,383	+ 6.86
Thai	1,288,427	1,220,586	+ 5.56
Foreigners	2,458,322	2,285,797	+ 7.55

Remark : * The numbers of the rooms covering all kind of all-over night staying places.

Source : Ministry of Tourism and Sports : www.mots.go.th

Announced on 18 November 2018

Table Showing the Comparison of Personal Expenses, distributed by types of expenses in 2017
(January – December 2017)

Pattaya Chonburi

1. Thai Citizen

(Unit : baht/person/day)

Group of Expenses January - December	Tourists			Travelers			Visitors		
	2017	2016	% change	2017	2016	% change	2017	2016	% change
1. Accommodation	955.73	899.93	+ 6.20	0.00	0.00	+ 0.00	886.84	834.57	+ 6.26
2. Food and Beverage	896.57	849.18	+ 5.58	634.52	600.87	+ 5.60	877.68	831.14	+ 5.60
3. Souvenirs	609.29	576.90	+ 5.61	389.24	367.90	+ 5.80	593.43	561.72	+ 5.65
4. Entertainment	453.10	432.25	+ 4.82	240.83	227.94	+ 5.65	437.80	417.41	+ 4.88
5. Touring within the area	200.41	191.92	+ 4.42	132.44	146.60	+ 3.98	196.95	188.63	+ 4.41
6. Transportation in the area	290.41	276.98	+ 4.85	178.66	170.91	+ 4.53	282.36	269.28	+ 4.86
7. Others	135.50	129.13	+ 4.93	113.16	108.46	+ 4.33	133.89	127.62	+ 4.91
Average Expense/person/day	3,541.01	3,356.29	+5.50	1,708.85	1,622.68	+ 5.31	3,408.95	3,230.37	+ 5.53

2. Foreigners

(Unit : baht/person/day)

Group of Expenses January - December	Tourists			Travelers			Visitors		
	2017	2016	% change	2017	2016	% change	2017	2016	% Change
1. Accommodation	1,676.82	1,540.25	+ 8.87	0.00	0.00	+ 0.00	1,668.97	1,532.76	+ 11.77
2. Food and Beverage	1,117.10	1,021.27	+ 9.38	786.04	726.74	+ 9.75	1,115.55	1,019.84	+ 8.81
3. Souvenirs	740.04	677.02	+ 9.31	626.26	567.23	+ 10.23	739.51	676.49	+ 8.24
4. Entertainment	785.45	730.55	+ 7.51	467.80	427.32	+ 7.30	783.96	729.08	+ 9.27
5. Touring within the area	300.13	282.43	+ 6.27	211.20	196.83	+ 10.03	299.72	282.01	+ 11.27
6. Transportation in the area	372.88	348.29	+ 7.06	304.05	284.22	+ 7.14	372.56	347.98	+ 6.03
7. Others	135.61	125.08	+ 8.42	112.09	106.08	+3.65	135.50	124.99	+5.07
Average Expense/person/day	5,128.03	4,724.89	+ 8.53	2,507.44	2,308.42	+8.81	5,115.77	4,713.15	+9.57

Total of Visitors

(Unit : baht/person/day)

Group of Expenses January - December	Tourists			Travelers			Visitors		
	2017	2016	% change	2017	2016	% change	2017	2016	% Change
1. Accommodation	1,509.62	1,388.43	+ 8.73	0.00	-	+ 0.00	1,477.66	1,358.14	+ 8.80
2. Food and Beverage	1,065.96	980.47	+ 8.72	658.82	621.92	+ 6.09	1,057.37	972.65	+ 8.71
3. Souvenirs	709.72	653.29	+ 8.64	428.82	401.23	+ 6.88	703.78	647.79	+ 8.64
4. Entertainment	708.38	659.82	+ 7.36	278.74	261.27	+ 6.69	699.29	651.13	+ 7.40
5. Touring within the area	277.01	260.97	+ 6.15	162.25	154.99	+ 4.68	274.58	258.66	+ 6.15
6. Transportation in the area	353.76	331.38	+ 6.75	199.60	189.85	+ 5.14	350.50	328.30	+ 6.76
7. Others	135.58	126.04	+ 7.57	112.98	108.06	+ 4.55	135.10	125.65	+ 7.52
Average Expense/person/day	4,760.03	4,400.40	+8.17	1,842.21	1,737.32	+ 6.04	4,698.28	4,342.32	+ 8.20

Source : Ministry of Tourism and Sports : www.mots.go.th

Announced on 18 November 2018

Table Showing the Comparison of Personal Expenses, distributed by types of expenses in 2018

(Second Period : April - June 2018)

Pattaya Chonburi

1. Thai Citizen

(Unit : baht/person/day)

Group of Expenses April - June	Tourists			Travelers			Visitors		
	2018	2017	% change	2018	2017	% change	2018	2017	% change
1. Accommodation	925.51	874.77	+ 5.80	0.00	0.00	+ 0.00	852.37	808.57	+ 5.42
2. Food and Beverage	997.76	935.43	+ 6.66	678.90	642.46	+ 5.65	972.56	913.26	+ 6.49
3. Souvenirs	749.96	718.19	+ 4.42	479.64	461.93	+ 3.83	728.60	698.79	+ 4.27
4. Entertainment	551.33	522.36	+ 5.55	267.01	255.23	+ 4.62	528.86	502.14	+ 5.32
5. Touring within the area	231.98	225.65	+ 2.81	122.09	118.65	+ 2.90	223.30	217.55	+ 2.64
6. Transportation in the area	329.05	346.07	+ 4.11	139.92	135.45	+ 3.32	314.10	302.39	+ 3.87
7. Others	81.42	77.25	+ 5.40	32.34	31.18	+ 3.72	77.54	73.76	+ 5.12
Average Expense:/person/day	3,867.01	3,669.72	+ 5.38	1,719.90	1,644.88	+ 4.56	3,697.33	3,516.46	+ 5.14

2. Foreigners

(Unit : baht/person/day)

Group of Expenses April - June	Tourists			Travelers			Visitors		
	2018	2017	% change	2018	2017	% change	2018	2017	% Change
1. Accommodation	2,633.64	2,474.86	+ 6.42	0.00	0.00	+ 0.00	2,622.27	2,464.38	+ 6.41
2. Food and Beverage	1,381.71	1,246.27	+ 10.87	1,065.85	978.25	+ 8.95	1,380.35	1,245.13	+ 10.86
3. Souvenirs	745.32	687.67	+ 8.38	528.73	490.75	+ 7.74	744.38	686.84	+ 8.38
4. Entertainment	686.57	656.32	+ 4.61	445.81	425.67	+ 4.73	685.53	655.34	+ 4.61
5. Touring within the area	290.70	281.26	+ 3.36	301.63	293.97	+ 2.61	290.75	281.31	+ 3.36
6. Transportation in the area	325.85	310.52	+ 4.94	254.64	243.46	+ 4.59	325.54	310.23	+ 4.94
7. Others	62.37	58.68	+ 6.29	29.55	28.46	+ 3.83	62.23	58.56	+ 6.27
Average Expense:/person/day	6,126.16	5,715.58	+ 7.18	2,626.21	2,460.56	+ 6.73	6,111.05	5,701.79	+ 7.18

Total of Visitors

(Unit : baht/person/day)

Group of Expenses April - June	Tourists			Travelers			Visitors		
	2018	2017	% change	2018	2017	% change	2018	2017	% Change
1. Accommodation	2,213.93	2,069.11	+ 7.00	0.00	0.00	+ 0.00	2,161.29	2,020.74	+ 6.96
2. Food and Beverage	1,287.37	1,167.45	+ 10.27	730.86	687.00	+ 6.38	1,274.14	1,156.22	+ 10.20
3. Souvenirs	746.46	695.41	+ 7.34	486.23	465.75	+ 4.40	740.27	690.04	+ 7.28
4. Entertainment	653.34	622.35	+ 4.98	291.02	277.84	+ 4.47	644.72	614.29	+ 4.95
5. Touring within the area	276.27	267.16	+ 3.41	146.20	141.91	+ 3.02	273.18	264.23	+ 3.39
6. Transportation in the area	326.64	311.92	+ 4.72	155.33	149.76	+ 3.72	322.56	308.13	+ 4.68
7. Others	67.05	63.39	+ 5.77	31.96	30.82	+ 3.70	66.22	62.63	+ 5.73
Average Expense:/person/day	5,571.06	5,916.79	+ 7.20	1,841.60	1,753.08	+ 5.05	5,482.38	5,116.28	+ 7.16

Source : Ministry of Tourism and Sports : www.mots.go.th

Announced on 18 November 2018

Labour Situation in Chonburi

The numbers of population with the ages over 15 years old in 2018 in Chonburi is 1,476,611 increasing from 2017 by 0.65% (9,622) and those who enter the labour power are 1,061,065 increasing from 2017 by 2.77% (28,626) comprising of 1,054,318 people employed or 99.36 and 6,716 people or 0.63% with unemployment and 248 or 0.02 waiting for being employed. (Reported by Chonburi Statistic Office)

The state of employment. There are 1,054,318 or 99.63 of all labours are employed. 37,477 or 3.55% work in agricultural area, 1,016,841 or 96.44 are out of agricultural area. Most of these labours (382,872 or 36.3%) work in industrial area while 185,501 or 17.60 are in wholesaling and retailing. Most of people with careers (356,298 or 33.79%) educated in secondary level and 312,406 or 29.63 are educated in Upper-secondary level. (Reported by Chonburi Statistic Office)

Non-system labours. Chonburi Statistics Office reported in 2017 that there were 322,305 workers or 31.60% of all employed workers worked as non-formal hiring decreasing from 2016 by 5.53% or 18,864 workers. There were 251,012 workers or 77.88% working outside agricultural area. The top type of job that workers worked as non-system hiring was in wholesaling and retailing (117,238 or 35.72%). The top occupation that most non-system labours (180,298 or 54.99%) worked in was the service area. According to the educational level, it was found out that 79,464 or 24.24% educated in secondary level with the ages between 40-44 years old (59,967 or 28.29%) and 33,541 were males while 26,426 were females.

Demand for workers in Chonburi. In 2018 (January – December 2018) employer/enterprise informed Chonburi Employment Office that there were 36,194 job vacancies that decreased from 2017 by 38.20% (10,005 vacancies). In this period, there were 14,120 workers applying for the positions increasing from 2017 by 220.84% (9,719). There were 12,054 put into the jobs increasing from 2017 by 359.4% (9,430). The ratio of putting the workers in the jobs per unemployed workers was 33.30%. The educational level needed was 12,440 workers or 34.37% with higher vocational certificated and 9,435 or 26.07% of bachelor degree were the second need. The most job vacancies (15,644 or 43.22%) were in wholesaling and retailing and 13,756 or 38.0% were in the production system.

The situation of overseas labours. The overseas labours who entered Thailand legally and allowed to work in December 2018 were 25,663.

The lowest wage rate in Chonburi in 2017. This rate was adjusted from 300 baht to be 330 baht and this has been effective since 1 April 2018.

The Statistic of foreign workers permitted to work in Chonburi (2016 – 2018)

Type of permission	2016		2017		2018	
	persons	%	persons	%	persons	%
1. Urgent informing to work type	273	1.3	423	45.4	412	7.60
2. BOI type	3,745	17.8	105	11.3	4,923	19.18
3. Temporary type (Section 7)	-	-	321	34.4	-	-
4. Excepted type by the Cabinet (Section 12)	-	-	83	8.9	4,939	19.24
5. General type (Section 9)	12,944	61.4	-	-	15,801	61.57
6. Section 13 type (4,111	19.5	-	-	-	-
total	21,073	100.00	932	100.00	25,663	100.00

Source : Chonburi Provincial Labour Office

February 2019

The Statistic of foreign workers permitted to work by the Cabinet in Chonburi (2016 – 2018)

Foreign workers permitted to work by the Cabinet	2016 Nationality/persons				2017 Nationality/persons				2018 Nationality/persons			
	Burmese	Laos	Cambodian	Total	Burmese	Laos	Cambodian	Total	Burmese	Laos	Cambodian	Total
1. Foreign workers permitted to work by the Cabinet's agreement	34,116	6,163	64,806	108,085	12,594	4,054	52,759	69,407	55	13	108	176
2. Foreign workers with nationality proved	26,786	3,188	9,471	39,445	24,925	2,153	8,553	35,631	1,559	407	909	2,875
3. Imported foreign workers (MOU)	3,391	2,651	29,242	35,284	24,925	2,153	8,553	51,847	14,657	10,734	56,184	81,575
4. Imported foreign workers (MOU) with special options	-	-	-	-	-	-	-	-	11,486	1,093	1,593	14,172
5. Foreign workers as the Cabinet's agreement operated at the one stop service center	-	-	-	-	-	-	-	-	31,596	5,431	72,714	109,741
6. Sea Fishery and marine animal preserving	-	-	-	-	-	-	-	-	19	2	51	72
Total	64,239	12,002	106,519	182,814	44,361	11,182	101,342	156,885	59,372	17,680	131,559	208,611

Source : Chonburi Provincial Labour Office

February 2019

**The Statistic of Unemployed Workers
(2016 - 2018)**

Type	2016 (persons)	2017 (persons)	2018 (persons)
1. Unemployed workers in the province	3,389	7,070	6,716
2. Labours in the province	1,044,241	1,029,568	1,061,095
3. The rate of Unemployed workers in the province	0.3	0.7	0.6

Source : Chonburi Provincial Labour Office

February 2019

The Statistic of the Change of Social Welfare Insurance (Section 33)

Insured persons registered for claiming the right when unemployed or hiring termination

Period 4 (2016 - 2018)

Type	4 th Period of 2016	4 th Period of 2017	4 th Period of 2018
1. Numbers of insured workers under Section 33.	680,948	702,107	764,342
2. The rate of change of insured workers under Section 33.	1.0	3.1	8.86
3. The numbers of self-insured workers received benefit under unemployment.	-	42,036	22,748
4. The changing rate of insured workers asking for compensation under unemployment.	241.4	639.1	-45.88
5. The numbers of insured workers registering for their compensation under employment termination.	934	-	396
6. The changing rate of insured workers registering for their compensation under employment termination.	-68.5	-	-

Source : Chonburi Provincial Labour Office

February 2019

Labour Situation in Chonburi
The Statistic Showing Working Status and Unemployment
Discriminated by Sex and Labour Power Status (2016 - 2018)

Type	2016	2017	2018
Over 15 years old	1,451,321	1,466,989	1,476,611
Having been in labour power	1,044,241	1,032,469	1,061,095
- On the jobs	1,040,852	1,025,079	1,054,318
- Unemployed	3,389	7,070	6,716
- Waiting for the jobs	-	320	248
Out of having been in labour power	407,080	434,520	415,516
- Doing a housework	147,044	132,230	134,467
- Studying	100,420	106,322	104,311
- Others	159,616	195,968	176,736

* The rate of job hiring per labour power 99.36

Source : Chonburi Provincial Labour Office

* Unemployment rate 0.6

February 2019

Table Showing Gross Product of Chonburi Province Following Yearly Price and Discriminated by Branches of Production 2012 – 2016

Branches of Production	2012 (m. baht)	2013 (m. baht)	2014 (m. baht)	2015 (m. baht)	2016 (m. baht)
Agricultural Branch	<u>17,180</u>	<u>18,428</u>	<u>16,014</u>	<u>15,831</u>	<u>16,697</u>
Agriculture, forestry, and fishery	17,180	18,428	16,014	15,831	16,697
Out of Agricultural Branch	<u>611,374</u>	<u>669,145</u>	<u>721,325</u>	<u>780,974</u>	<u>895,800</u>
Mineral and stones mines	2,609	2,823	2,906	3,165	3,957
Industry	310,981	334,353	367,975	396,417	462,242
Electricity, gas separation and air conditioner	39,152	52,283	54,274	62,468	65,040
Water work, drainage, eliminating and treating waste water	3,168	3,594	3,866	4,248	4,225
Construction	14,725	20,414	20,744	22,250	22,917
Wholesaler, retailer, maintaining cars and motorcycles	62,612	65,139	71,973	77,446	90,604
Transportation and warehouse	43,332	46,367	45,861	52,989	58,033
Hotel and restaurant	22,913	26,116	30,136	38,149	57,701
Information Technology and Communication	3,805	3,780	3,950	4,058	3,541
Finance and insurance	15,470	19,051	22,643	24,706	26,988
Immovable properties	11,390	9,887	14,373	12,450	13,293
Scientific experts and technicians	6,047	5,252	5,406	5,310	5,354
Management and service support	12,564	12,251	11,379	12,082	12,645
Governing administration and country defending and regulated social welfare	37,289	40,012	36,719	32,102	33,850
Education	7,378	7,774	8,500	11,257	11,545
Health and social welfare	8,287	8,801	9,086	9,707	10,266
Art, Entertainment and leisure	964	1,036	1,154	1,422	1,651
Other services	6,687	10,212	10,380	10,748	11,949
1. Provincial Gross Product	<u>628,554</u>	<u>687,573</u>	<u>737,339</u>	<u>796,805</u>	<u>912,498</u>
2. Provincial Gross Product per head (Baht)	394,850	427,095	453,055	487,267	548,877
3. Numbers of population (1,000 persons)	1,592	1,610	1,627	1,645	1,662

Source : Office of the National Economic and Social Development Board www.nso.go.th : March 2019

Table Showing Numbers of Organization, Workers, and Amount of Capital Discriminated by Types of Industries in Chonburi in 2018

Types of Industries	Numbers of Industries	Amounts of Capital (Million Baht)	Numbers of Workers
1. Plant production industry	1	32.86	49
2. Food industry	8	175.88	158
3. Beverage Industry	4	54.50	41
4. Textile industry	3	48.20	70
5. Dress industry (Except shoes)	1	28.00	20
6. Animal skin producing and animal skin product industry	2	48.50	67
7. Wood and wooden product industry	12	338.07	267
8. Housing furniture or interior decorated by wood, glass, rubber and others	5	28.78	78
9. Paper producing and paper product industry	6	633.22	182
10. Printing, blinding, cover making and printing mould industry	12	388.12	230
11. Chemical product industry	15	123.09	194
12. Petroleum product industry	1	28.85	6
13. Rubber product and rubber industry	8	141.91	156
14. Plastic product industry	48	3,229.77	1,928
15. Non-metal product industry	8	181.42	96
16. Basic metal product industry	1	0.00	0
17. Metal product industry	32	865.58	398
18. Making engine and machine industry	22	1,086.37	853
19. Electric appliance and accessory industry	25	525.75	514
20. vehicle and vehicle parts industry including maintaining equipment	37	575.18	449
21. Other production industries	42	673.79	526
Total	293	9,207.84	6,282

Source : Chonburi Industrial Office

February 2019

Table Showing the Numbers of the Remain of Trading Registering, Discriminated by the Type of Registering from 2016 - 2018

Year	Total	Commercial Registering			Remark
		Single owner	Group	Partnership	
2016	1,227	1,224	-	3	295 termination
2017	1,404	1,398	-	6	-
2018	1,552	1,542	-	10	435 termination

Source: Bureau of Finance, Pattaya City

May 2019

Table Showing Cooperative Units, Discriminated by the Types of Cooperative Units in 2018

No	Name of Cooperative Units	Types of Cooperative Units	Numbers of members
1	Natural Agriculture Wat Yarn	Agricultural Cooperative Unit	111
2	Banglamung Natural Agriculture	Agricultural Cooperative Unit	1,116
3	Pattaya Minibus	Service Cooperative Unit	442
4	Banglamung Minibus	Service Cooperative Unit	61
5	Pattaya Boat Tourism	Service Cooperative Unit	121
6	Koa Larn Minibus	Service Cooperative Unit	33
7	Pattana Bortong Taxi	Service Cooperative Unit	186
8	Ruamjai of Central Park Village Park 4 Phrase 2	Service Cooperative Unit	26
9	Barnmankong Khoanoi Pattaya	Service Cooperative Unit	305
10	Loma Taxi Pattaya	Service Cooperative Unit	175
11	Central Park Village 5 Service	Service Cooperative Unit	42
12	Central Park Village 3 Service	Service Cooperative Unit	43

Source : Chonburi Cooperative Office, March 2019

Table Showing the Amount of Cars Registered, Discriminated by Types from 2016 – 2018

Types	2016	2017	2018
Personal car not over 7 seats	22,013	24,263	29,752
Personal car over 7 seats	230	232	239
Personal truck	8,732	8,749	9,178
Personal tricycle	-	-	-
Hired service vehicle	-	-	-
Hired service truck not over 7 seats	38	87	73
Hired mall four-wheeled car	-	-	-
Hired tricycle	7	2	16
Business service car	1	1	-
Hired Tour vehicle	-	-	-
Hired vehicle	-	-	-
Motorcycle	102,839	95,803	99,843
Tractor	458	504	625
Grinding truck	35	20	22
Car used for agriculture	-	-	-
Trailer	142	86	59
Total	134,495	129,888	139,807

Source : Chonburi Transportation Office, Banglamung Branch

January 2019

Local Unit Finance (Pattaya City)

Authentic Revenue – Authentic Payment of Pattaya City : 2016 - 2018

Descriptions	2016	2017	2018
Authentic Revenue	3,645,475,656.69	3,857,229,240.58	3,640,626,466.31
Authentic Payment	3,303,652,224.18	3,222,741,045.59	2,833,811,176.67
Authentic Revenue is More than Authentic Payment	341,823,432.51	634,488,194.99	806,815,289.64

Source : Bureau of Finance, Pattaya City

October 2018

Chart Showing the Statistic of Authentic Revenue – Authentic Payment
of Pattaya City : 2016 – 2018

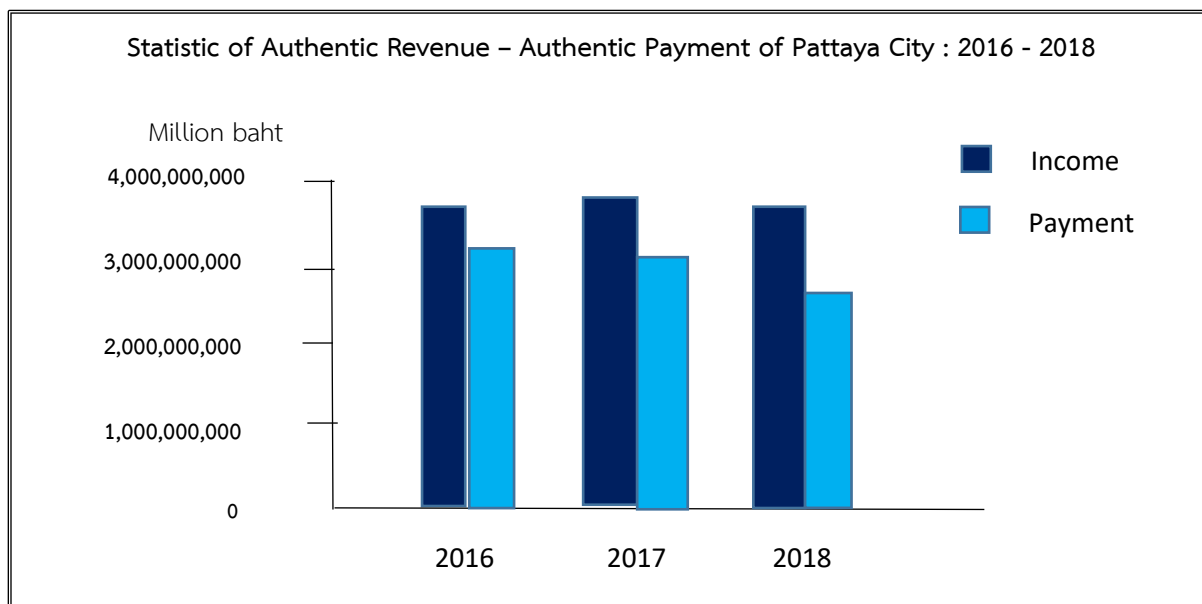


Table Showing Total Authentic Revenues, Budget Year 2016 - 2018

Description	Fiscal Year 2016	Fiscal Year 2017	Fiscal Year 2018
Kor. Revenues			
1. Tax groups	428,831,240.06	495,908,905.12	505,393,119.62
2. Fees, Fines, and License	136,978,978.61	177,460,935.87	125,867,545.59
3. Revenues from assets	69,811,112.88	46,620,852.09	43,582,127.90
4. Revenues from infrastructure and commercial	2,766,100.78	2,347,341.65	1,829,134.09
5. Revenues from others	14,964,961.70	13,684,619.48	19,343,763.86
6. Providing tax	1,376,629,262.66	1,539,031,971.37	1,786,061,752.25
Total revenues of 6 items and others	2,029,981,656.69	2,275,054,625.58	2,482,077,443.31
Total of supportive budget with fixed objective (Budgeting Office)	1,615,494,000.00	1,582,174,615.00	1,158,549,023.00
Grand Total	3,645,475,656.69	3,857,229,240.58	3,640,626,466.31

Source : Bureau of Finance, Pattaya City

October 2018

Table Showing Total Authentic Expenses, Budget Year 2016 -2018

Description	Fiscal Year 2016	Fiscal Year 2017	Fiscal Year 2018
1. Expenses of Central Budget	101,600,456.08	63,102,319.11	66,963,721.48
2. Expenses of work units	1,618,730,247.08	1,590,910,660.49	1,663,973,405.96
3. The expenses of supportive budget with fixed objective	1,583,321,521.02	1,568,728,065.99	1,102,874,049.23
4. The expenses that entirely paid from collective budget	-	-	-
5. Expenses of loan	-	-	-
Total Expenses	3,303,652,224.18	3,222,741,045.59	2,833,811,176.67

Source : Bureau of Finance, Pattaya City

October 2018

Table Showing the Details of Authentic Incomes by the Budget Year 2016 – 2018

Items	2016 Authentic Income	2017 Authentic Income	2018 Authentic Income
Self-collecting income			
Tax section			
1. Housing and land tax	369,466,219.71	430,493,230.10	433,604,438.58
2. Supporting local area tax	3,665,342.24	3,278,530.60	3,045,617.14
3. Sign tax	55,699,678.11	62,137,144.42	68,743,063.90
Total all tax incomes	428,831,240.06	495,908,905.12	505,393,119.62
Fees, Fine, and License			
1. Selling liquor license	649,301.40	682,298.10	441,591.80
2. Gambling playing license	8,753.50	5,520.00	2,420.00
3. Car park managing fee	1,010,025.00	931,625.00	743,350.00
4. Building control fee	3,965,234.28	2,916,675.87	1,822,729.46
5. Garbage collecting fee	46,552,139.00	53,335,611.00	33,968,503.00
6. Taking stool or waste fee	4,725,000.00	4,762,800.00	4,762,800.00
7. license for food selling place or food storage	-	-	500.00
8. Citizen registering fee	615,990.00	530,780.00	483,960.00
9. Citizen I.D. fee	466,700.00	2,255,160.00	2,174,340.00
10. Fee on land based on Act 9 of land	-	-	1,040.00
11. License for being a controller	-	-	20.00

Items	2016 Authentic Income	2017 Authentic Income	2018 Authentic Income
12. Waste water treatment fee	51,577,955.45	55,200,815.96	50,762,812.70
13. Water drainage fee	6,634,741.25	5,295,982.00	5,582,389.75
14. Commercial registering fee	76,360.00	87,250.00	90,450.00
15. Waste management fee	-	-	2,600.00
16. Business on selling gasoline fee	-	-	36,750.00
17. Other fees (Keeping cleaning fee, and loaning fee)	1,554,458.33	491,400.00	121,639.95
18. Fine from illegal parking	-	-	-
19. Fine from breaking land traffic laws	3,139,750.00	2,894,250.00	3,156,800.00
20. Fine from breaking protecting fire laws	-	-	-
21. Fine from breaking citizen registering laws	4,200.00	6,050.00	5,720.00
22. Fine from breaking citizen I.D. laws	216,950.00	190,970.00	175,820.00
23. Fine from breaking rabies protecting laws	-	-	3,000.00
24. Fine from breaking the city regulations	4,193,450.00	4,639,210.00	4,129,010.00
25. Fine from breaking the contract agreement	1,707,525.40	32,694,417.94	6,887,543.93
26. Fine from breaking commercial registering	-	-	1,040.00
27. License fee for trading hazous goods permission	6,186,750.00	6,658,700.00	6,707,000.00
28. Fee from permission of food selling place or collecting food for kitchen larger than 200 square meters.	2,800,800.00	2,891,900.00	3,215,900.00

Items	2016 Authentic Income	2017 Authentic Income	2018 Authentic Income
29. License for selling things in public places	125,000.00	360,000.00	254,000.00
30. License for setting up a private market	36,000.00	42,000.00	40,000.00
31. License for controlling buildings	9,130.00	8,930.00	8,460.00
32. License for advertising using amplifier	20,265.00	7,890.00	9,455.00
33. Other license (Waste water, water drainage, placing advertising sign)	702,500.00	570,700.00	275,900.00
34. Other fines	-	-	-
Total Incomes from fees and license	136,978,500.00	177,460,935.87	125,867,545.59
Incomes from Assets			
1. Land hiring	1,340,000.00	1,077,450.00	1,877,450.00
2. Rental or service area	18,707,208.30	13,412,058.31	10,314,875.00
3. State bond, and interest	1,469,108.47	1,698,260.45	-
4. Interest from banks	48,294,796.11	30,433,038.33	31,242,902.90
5. Dividend or other rewards	-	-	-
6. Compensation under the laws	-	-	-
7. Incomes form other assets	-	-	146,900.00
Total Incomes from Assets	69,811,112.88	46,620,852.09	43,582,127.90
Incomes from public utility and commercial			
1. Offering money from the pawn shop	2,766,100.78	2,347,341.65	1,892,134.09
Total from public utility and commercial	2,766,100.78	2,347,341.65	1,892,134.09

Items	2016 Authentic Income	2017 Authentic Income	2018 Authentic Income
Miscellaneous Incomes			
1. Selling unwanted office equipment	1,031,100.00	1,345,500.00	-
2. Selling medical supplies	-	-	-
3. Money offered by someone	-	-	-
4. Selling building plan	1,100,800.00	929,500.00	121,600.00
5. Drawing building plan	23,000.00	-	-
6. Selling building plan and request form	-	-	-
7. Certifying and copying documents	-	-	-
8. Library member applying fee	3,840.00	2,370.00	1,980.00
9. Other miscellaneous incomes	12,806,221.00	11,407,249.00	19,200,183.86
Total Miscellaneous Incomes	14,964,961.70	13,684,619.48	19,343,763.86
Total Incomes from Self-collecting	653,352,394.03	736,022,654.21	696,015,691.06
Incomes Collected by the Government and Allocated to Local Administration Organization			
Tax Allocated Section			
1. Tax and fee from cars and other vehicles	4,406,358.22	11,283,797.27	11,057,875.02
2. Value Added tax following Act of decentralization	914,735,351.41	858,686,690.25	952,417,663.30
3. Value Added tax collected under Revenue Code	39,354,748.24	48,370,561.36	-
4. 5% of Value Added tax under the Act of Provincial Administration Organization	-	-	33,949,861.36

Items	2016 Authentic Income	2017 Authentic Income	2018 Authentic Income
5. Value Added Tax 1 of 9	39,961,550.59	38,560,734.36	41,603,213.89
6. Specific business tax	-	-	-
7. Liquor tax	23,367,874.24	23,954,865.53	-
8. Excise tax	50,283,849.33	57,728,407.41	94,020,785.69
9. Royalty of Mine	1,031,290.91	1,776,834.09	1,584,163.93
10. Royalty of petroleum	791,787.72	744,977.10	730,696.06
11. Fee from land registering of right and owner	302,687,452.00	497,925,104.00	650,697,493.00
12. Other allocated taxes	-	-	-
Total Allocated Tax Section	1,376,629,262.66	1,539,031,971.37	1,786,061,752.25
Total Self-collecting and Government Collecting Incomes	2,029,981,656.69	2,275,054,625.58	2,482,077,443.31
External Allocated Budget (from the Government)			
Specific External Allocated Budget			
1. Allocated budget with specific purpose for education	-	51,030,830.00	-
2. Allocated budget with specific purpose for infrastructure	1,116,255,700.00	1,019,633,385.00	-
3. Allocated budget with specific purpose	-	-	573,839,123.00
General Allocated Budget			
1. Expenses on developing and improving ways to protect and solve drugs problem	9,940,000.00	14,839,000.00	15,000,000.00
2. General allocated budget for education	409,247,500.00	416,567,700.00	481,686,900.00

Items	2016 Authentic Income	2017 Authentic Income	2018 Authentic Income
3. Supported money for elderly, disable and AIDS patient	80,050,800.00	80,103,700.00	-
4. Supported money assisting elderly	-	-	72,505,200.00
5. Supported money assisting disable	-	-	13,564,800.00
6. Supported money assisting AIDS patient	-	-	2,004,000.00
Total Allocated Budget for Specific Purpose	1,615,494,000.00	1,582,174,615.00	1,158,549,023.00
Grand Total	3,645,475,656.69	3,857,229,240.58	3,640,626,466.31

Remark : Overall incomes do not include the debts of tax section

Source : Bureau of Finance, Pattaya City

October 2018

Table Showing the Details of Expenses in Fiscal Year 2016 -2018

Items	2016 Authentic Income	2017 Authentic Income	2018 Authentic Income
Payment Fixed on Budget Agreement of Pattaya City			
1. Payment of Central Budget			
Subsidizing of Social Welfare	8,919,059.00	8,758,745.00	8,604,965.00
Allowance of AIDS patients	1,744,000.00	1,876,000.00	1,894,000.00
Advanced expense	41,473,560.12	320,000.00	1,523,254.00
Financial aid (for one's service)	309,981.00	388,110.00	436,755.00
Payment on commitment	6,372,591.00	5,547,632.45	4,730,250.00
Fee for Municipality Assembly	-	-	-
Supported budget for community welfare of Pattaya City	511,000.00	607,360.00	594,950.00
Payment for traffic management	819,591.00	1,340,272.45	935,300.00
Payment of debt of Government Saving Bank	-	-	-
Project of health insurance fund of Pattaya City	5,042,000.00	3,600,000.00	3,200,000.00
Pensions	42,781,264.96	46,211,831.66	49,765,497.48
Contribution for pensioner fund	36,716,610.00	40,094,198.00	41,688,478.00
Assisted fund for living allowance of pensioners	1,503,078.46	1,477,470.08	1,414,952.83
Assisted fund for pensioners' children's education	60,530.00	71,550.00	67,800.00
Assisted fund for pensioners' health care	929,075.50	1,227,856.45	1,531,218.65
Pension for permanent employees	3,571,971.00	3,340,757.13	5,063,048.00
Total Payment of Central Budget	101,600,456.08	63,102,319.11	66,963,721.48

Items	2016 Authentic Income	2017 Authentic Income	2018 Authentic Income
2. Payment of Work Units			
Budget for personnel	359,459,012.37	365,012,437.29	367,174,992.39
Salary of politic unit	8,384,119.38	5,604,799.57	7,226,452.00
Salary of permanent officers	351,074,892.99	359,407,637.72	359,948,540.39
2.1 Officers' salary	143,591,027.802	145,095,571.65	148,891,947.26
2.2 Permanent employees' salary	29,959,676.80	29,821,523.20	28,907,830.11
2.3 Officers' remuneration	177,524,188.39	184,490,542.87	182,148,763.02
Operation Budget	1,014,411,742.11	939,075,280.68	871,450,778.55
1. For compensation	81,267,643.00	77,289,500.44	77,749,524.08
2. For spending	647,163,966.56	605,727,788.47	556,104,359.19
3. For buying material	171,583,302.21	154,194,604.25	134,761,360.11
4. For public facility	114,396,830.34	101,863,387.52	102,835,535.17
Investment Budget	210,836,862.60	261,549,892.52	419,379,885.02
1. For material and equipment (Note. 1)	149,165,762.60	67,308,410.52	40,057,385.02
2. For land and construction (Note. 2)	61,671,100.00	194,241,482.00	379,322,500.00
3. Other expenses	9,020,000.00	7,050,000.00	50,000.00
4. Allocated budget	25,002,630.00	18,223,050.00	5,917,750.00
Total expenses of work units	1,618,730,247.08	1,590,910,660.49	1,663,973,405.96
Total payment fixed on Budget Agreement of Pattaya City	1,720,330,703.16	1,654,012,979.60	1,730,937,127.44
B. Spending on Specific allocated budget	1,583,321,521.02	1,568,728,065.99	1,102,874,049.23
Total Spending on Specific allocated budget	1,583,321,521.02	1,568,728,065.99	1,102,874,049.23
Overall budget spent by incomes	3,303,652,224.18	3,222,741,045.59	2,833,811,176.67

Source : Bureau of Finance, Pattaya City

October 2018

Status of Finance of Pattaya City in the Fiscal Years 2016 – 2018

Fiscal Year	Bank	Type of Deposit			Provincial Finance	Total
		Fixed Deposit	Savings	Current		
2016	GSB	1,230,080,585.20	897,436,613.15	-	-	2,843,891,358.85
	Krung Thai	390,783,000.84	223,973,252.93	4,782,253.97		
	GHB	74,505,221.22	-	-		
	BAC	22,330,431.54	-	-		
2017	GSB	1,443,730,608.97	1,059,454,918.07	-		3,185,755,532.31
	Krung Thai	492,119,050.39	91,246,437.90	2,053.97		
	GHB	76,461,424.78	-	-		
	BAC	22,741,038.13	-	-		
2018	GSB	2,254,052,371.71	971,943,308.52			4,327,873,406.28
	Krung Thai	394,185,074.93	579,088,354.26	27,992,638.81		
	GHB	77,608,346.16	-	-		
	BAC	23,003,311.89	-	-		

Source : Bureau of Finance, Pattaya City

October 2018

The capability of financial and fiscal status of Pattaya City is able to support itself with the revenues from 7 sources which are; 1. taxes, 2. fees, fines and issuing license, 3. assets, 4. Infrastructure and commercial, 5. miscellaneous incomes, 6. supported budget, 7. other incomes and 8. loans.

The expense of Pattaya City is divided into two types which are central expenses and work unit expenses.

The central expenses are paying debt (loan) and interests, fixed expenses, reserved budget, and pension collection.

The work units' expenses are divided into two types as follows:

1. Regular expenses which are salary, permanent wages, temporary wages, payment in return and material, supported money, and other expenses.
2. Investment expenses which are permanent material, land and construction

Commercial Management

Management of Pawn Shop from 2016 – 2018

Items	2016	2017	2018	Increase/ Decrease
1. Circulated Money	74,768,636.33	78,680,872.42	81,729,429.24	+3.87%
2. Values of pawned properties	74,317,500.00	76,709,800.00	71,223,400.00	-7.15%
3. Net profit	7,824,472.17	6,097,113.64	6,165,674.38	+1.12%
4. Values of pawned properties over due date	5,074,800.00	3,729,200.00	3,694,000.00	-0.94%
5. Number of service users	12,322	12,382	11,757	-5.05%

Receive and Payment of Pattaya City Pawn Shop from 2016 – 2018

Items	2016	2017	2018	Increase/Decrease
Real incomes	11,316,243.32	9,663,029.02	9,738,628.67	+0.78
Real expenses	3,491,771.15	3,565,915.38	3,572,954.29	+0.20
Real incomes more than real expenses	7,824,472.17	6,097,113.64	6,165,674.38	+1.12

Source : Pawn Shop of Pattaya City, February 2019

Social
Aspect

Social Aspect

Pattaya City is an important tourist city which is worldwide known, so many Thai and foreign tourists come to visit. This makes a great change of community to be the community of commercial providing services to tourists. There are 42 communities in Pattaya City and some are still living on agriculture, and fishing. It is found out that there are people moving from other regions to live and work in Pattaya City. This causes the community become complicated and there are various religions, languages, cultures, traditions, and ways of life.

1. Religion

The majority or 80% of people in Pattaya are Buddhists, then 16% of people are Muslims, 2% are Christians, and 2% are others. There are 24 important religious places for each religion to perform activities as follows:

Monasteries in Pattaya City

1. Wat Chaimongkol Moo 10 Norngprue Tel. 038-427030, 038-428277
2. Wat Tamsamakee Moo 10 Norngprue Tel. 038-428399
3. Wat Boonkanchanaram Moo 12 Norngprue Tel. 038231449
4. Wat Chonglom NakluaMoo2 Naklua Tel. 038-221278
5. Wat Poetisumpan Moo 5 Naklua Tel.038-225452
6. Wat Sawangfapuetararm Moo4 Naklua Tel. 038-221552
7. Wat Norngyai Moo 6 Naklua Tel. 038-421993
8. Wat Maisamrarn (Koa Larn) Moo7 Naklua Tel. 038-429951
9. Wat Puttiwarararm Moo 6 Norngplalai Tel. 038-221990
10. Wat Intanarrarm Moo 4 Huay Yai Tel. 038-239701
11. Wat Kratuengtorng Moo 12 Jomtian Beach Tel. 038-756124
12. Jittaparwanwittayalai Moo 1 Norngprue Tel. 038-221131
13. Wat Kaoprayai Pratamnak Rd. Norngprue

House of Priest

1. Norng-or House of Priest 31 Moo 9 Norngprue Tel. 038-424415

Mosques in Pattaya City

- | | |
|-----------------------------|------------------|
| 1. Darulibadha Mosque | Moo 9 Norngprue |
| 2. Tayatusarsarkirin Mosque | Moo 6 Naklua |
| 3. Nurhulyarkin Mosque | Moo 5 Norngprue |
| 4. Tor-atillah Mosque | Moo 10 Norngprue |
| 5. Darul-ubror Mosque | Moo 5 Norngprue |
| 6. Chaekmoohumadalee Mosque | Moo 6 Norngprue |
| 7. Yarmee-ulhislam Mosque | Moo 6 Norngprue |

Christ Churches

1. Catholic Church
 - 1.1 St. Nicholas Church Tel. 038-716401
2. Protestant Church
 - 2.1 Pattaya Christ Tel. 038-429004
 - 2.2 Nimitmai Samakeetum Church

2. Population

Population is the human resource that is changeable all the time and this can affect economic system, man power, the use of land, the use of natural resources and public utility. This is the important section of making development plan of the local government in the aspect of economic system management, social management, man power management, the use of land management, and the use of natural resources management to be effective and get along with good quality of life in the future.

Statistic Presenting Number of Population in Pattaya City Area
Based on housing register 2008 – 2018

Year	Number of Population Total	Male (person)	Female (person)	Housing
2008	104,797	49,241	55,556	19,326
2009	106,214	49,589	56,625	19,702
2010	107,944	50,184	57,760	20,267
2011	109,037	50,551	58,486	20,582
2012	110,491	51,173	59,318	20,756
2013	111,910	51,639	60,271	21,122
2014	114,192	52,561	61,631	21,844
2015	115,840	53,239	62,601	22,255
2016	117,371	53,883	63,488	22,803
2017	118,511	54,306	64,205	23,969
2018	119,122	54,513	66,609	23,786

**Note : There are approximately 4 or 5 times of unregistered population over registered population.

Source : Registration and Citizen ID Section, Office of the Chief administrator of Pattaya city

February 2019

Statistic of Population in Pattaya City in 2016 - 2018

Population	2016	2017	2018	Increasing	% (+/-)
All Population	117,371	118,511	119,122	611	+0.51
Male Population	53,883	54,306	54,513	207	+0.38
Female Population	63,488	64,205	64,609	404	+0.63
Number of Households	22,803	23,969	23,786	-183	-0.77

Statistic of Population on Koa Larn in 2016 – 2018

Population	2016	2017	2018	Increasing	% (+/-)
All Population	2,869	2,912	2,934	22	+0.75
Male Population	1,428	1,438	1,454	16	+1010
Female Population	1,441	1,474	1,480	6	+0.14
Number of Households	625	619	626	7	+1.19

Statistic of Population In Pattaya City Area in 2018

Populations	Male	Female	Total
Tambon Nong Prue	29,993	37,420	67,413
Tambon Nong Pla Lai	1,105	1,238	2,343
Tambon Huay Yai	71	93	164
Tambon Na Klua (Include Koa Larn)	23,344	25,858	49,202
- Koa Larn (Moo.7 Tambon Ka Klua)	1,454	1,480	2,934
Total	54,513	64,609	119,122

The average of people per area 2,229 person/km² (Area 53.44 km²)

The average of people (Koa Larn) per area 720 person/km² (Area 4.07 km²)

Number of Households (Owner) in 2018

Area	Number of Households
Tambon Nong Prue	15,038
Tambon Nong Pla Lai	520
Tambon Huay Yai	29
Tambon Na Klua	8,199
- Koa Larn	626
Total number of household	23,786

1 household comprises of 5 people.

Number of Houses in 2018

Area	Number of Houses
Tambon Nong Prue	125,813
Tambon Nong Pla Lai	1,339
Tambon Huay Yai	39
Tambon Na Klua	36,838
- Koa Larn	1,367
Total number of houses	164,029

Statistic Presenting Number of New Born Baby from 2016 – 2018

Number of New Born Baby	2016	2017	2018
Male	2,664	2,591	2,505
Female	2,422	2,532	2,429
Total	5,086	5,123	4,934

Statistic Presenting Number of Death from 2016 – 2018

Number of Death	2016	2017	2018
Male	999	917	944
Female	428	463	498
Total	1,427	1,380	1,442

It can be seen from the official statistic table illustration that the population of Pattaya City is not crowded, however, the population of Pattaya City is really crowded as Pattaya City is a famous tourist city that meets a rapid growth and more people from other regions move into the area of Pattaya City to earn their livings. This makes the number of unregistered population increasing sharply 4 - 5 times of the real registered population (approximately 400,000 – 500,000). They come to live in Pattaya without official informing according to the house registering laws.

Numbers of Voters in General Election from 2016 – 2018

Numbers of Voters	2016	2017	2018
Males	33,489	33,737	33,997
Females	44,566	45,106	45,606
Total	78,055	78,843	79,603

Statistic Showing Pattaya Mayor Election from 2004 – 2012

Year	Number of Voters	Acting Voters	%	Increase/Decrease
2004	56,681	28,986	51.14	-
2008	64,735	33,035	51.03	-0.11
2012	69,205	28,724	41.51	-9.52

Statistic Showing Pattaya Council Member Election from 2004 – 2012

Year	Number of Voters	Acting Voters	%	Increase/Decrease
2004	55,209	28,815	52.19	-
2008	64,036	32,791	51.21	-0.98
2012	68,717	28,640	41.68	-9.53

Information of Pattaya City Mayor Election and Members of Pattaya City Council

On 17 June 2012

1. The Election of Pattaya City Mayor on 17 June 2012

There was 1 Mayor of Pattaya City and there were 69,205 voters in Pattaya City.

28,724 voters or 41.51% came to vote while 40,481 voters or 58.49% did not come to vote.

25,562 election tickets or 88.99 were perfect.

925 election tickets or 3.22 were not perfect.

2,237 election tickets or 7.79 were found no vote.

2. The Election of Pattaya City Council Members on 17 June 2012

There were 24 members of Pattaya City Council Members and there were 68,717 voters.

Region 1 of Pattaya City Council Members Election with 20,119 voters

9,641 voters or 47.92% came to vote while 10,478 voters or 52.08% did not come to vote.

8,558 election tickets or 88.77% were perfect.

361 election tickets or 3.74% were not perfect.

722 election tickets or 7.49% were found no voted.

Region 2 of Pattaya City Council Members Election with 11,009 voters

4,098 voters or 37.22% came to vote while 6,911 voters or 62.78% did not come to vote.

3,415 election tickets or 83.33% were perfect.

166 election tickets or 4.05% were not perfect.

517 election tickets or 12.62% were found no voted.

Region 3 of Pattaya City Council Members Election with 16,875 voters

6,726 voters or 39.86% came to vote while 10,149 voters or 60.14% did not come to vote.

5,737 election tickets or 83.33% were perfect.

195 election tickets or 2.09% were not perfect.

794 election tickets or 11.80% were found no voted.

Region 4 of Pattaya City Council Members Election with 20,714 voters

8,175 voters or 39.47% came to vote while 12,539 voters or 60.53% did not come to vote.

6,840 election tickets or 83.67% were perfect.

459 election tickets or 5.61% were not perfect.

876 election tickets or 10.72% were found no voted.

3. Community Aspect

There are 42 communities in Pattaya City as follows:

Community	Responsible Area	Community	Responsible Area
1. Kratinglai	Moo 1 Naklua Moo 6 – 8 Nongplalai	22.Watboonkanjanararm	Moo 11-12 Nongprue
2. Koa Larn	Moo 7 Naklua	23. Tonkrabok	Moo 6 Naklua
3. Kao Talo	Moo 11, Moo 13 Nongprue	24. Rongmaikeed	Moo 2 Naklua, Moo Nongplalai
4. Kaonoi	Moo 13 Nongplue	25. Norngtabaek	Moo 5 Naklua
5. Soi Korpai	Moo 10-12 Nongplue	26. Norngpangkae	Moo 11-12 Nongplue
6. Norng-or (Chunsai)	Moo 6 Naklua, Moo 9 Nongplue	27. Norngyabarnibon	Moo 6 Naklua
7. Soi Praisanee	Moo 5 Naklua	28. Walking Street	Moo 10 Nongplue
8. Soi Hartanwar	Moo 6, Moo 9 Nongprue Moo 6 Naklua	29. Charoensukpattana	Moo 6 Naklua, Moo 5-6 Nongprue
9. Soi Hok Yotsak	Moo 9 Nongprue	30. Barnmerntangrod fai	Moo11, 13 Nongprue
10. Talardkao Naklua	Moo 2, 4 Naklua	31. Barnkrabok 33	Moo 4, 6 Naklua
11. Teppasit	Moo 10, 11 Nongprue	32. Choomsai	Moo 9 Nongprue
12. Tapparaya	Moo 10, 12 Nongprue	33. Pattayataipattana	Moo 9 – 10 Nongprue
13. Barnhuatoon	Moo 5 – 6 Naklua	34. Chaiyapornwitee	Moo 4 Naklua
14. Pattayaklang	Moo 5, 9 Nongprue	35. Norngyailang	Moo 6 Naklua
15. Poetisampun	Moo 5 – 6 Naklua	36. Norngyaikaownar	Moo 5 – 6 Naklua
16. Rungrueng	Moo 6 Naklua	37. Arunotai	Moo 9 Nongprue
17. Roi-lang	Moo 5 Naklua	38. Chaiyapuek	Moo 12 Nongprue Moo 4 Huay-yai
18. Larpoe	Moo 4 – 5 Naklua	39. Marbpradoo	Moo 11, 13 Nongprue
19. Wat Chaimongkol	Moo 9 10 Nongprue	40. Laenrachawed	Moo 5 Naklua
20. Wat Chonglom	Moo 1 - Naklua	41. Bongkote	Moo 9 – 10 Nongprue
21. Wat Tamsamakkee	Moo 11, 13 Nongprue	42. Paniadchang	Moo 6 Naklua, Moo 9 Nong Prue

Source : Bureau of Social Development, Pattaya City

February 2019

**Statistic Showing Numbers of Population in Pattaya City Distributed
by Communities in 2018**

Community	Male	Female	Total	Community	Male	Female	Total
1. Soi 6 Yotsak	96	102	198	22. Wat Tamsamakee	1,490	1,716	3,206
2. Teprasit	161	181	342	23. Central Pattaya	669	750	1,419
3. Poetisampan	889	930	1,819	24. Soi Praisanee	819	939	1,758
4. Rungrueng	392	505	897	25. Tonkrabok	229	245	474
5. Larpoe	365	390	755	26. Tappraya	1,127	1,409	2,536
6. Watbunkanjanaram	2,428	3,045	5,473	27. Koa Larn	1,386	1,385	2,771
7. Norngpangkae	502	609	1,111	28. Walking Street	373	412	785
8. Roilung	631	805	1,436	29. Charoensukpattana	384	404	788
9. Norngtabaek	452	589	1,041	30. Barn-nerntanglodfai	181	252	433
10. Kaotalo	172	204	376	31. Barnkrabok 33	612	701	1,313
11. Norng-or	473	489	962	32. Chumsai	1,208	1,642	2,850
12. Khaonoi	1,128	1,492	2,620	33. Pattayatai Pattana	652	732	1,384
13. Kratinglai	563	605	1,168	34. Chaipornwitee	856	976	1,832
14. Wat Chaimongkon	385	403	788	35. Norngyai Barnlarng	389	415	804
15. Talardkao Naklua	1,330	1,484	2,814	36. Pattayanua	600	725	1,325
16. Wat Chonglom	342	368	710	37. Arunotai	889	1,155	2,044
17. Norngyai Barnbon	408	475	883	38. Chaiyapuek	647	851	1,498
18. Soi Har Tanwa	303	339	642	39. Marbpradoo	644	763	1,407
19. Barnlongmaiheed	1,164	1,294	2,458	40. Laemrachawet	895	1,076	1,971
20. Soi Korpai	1,227	1,442	2,669	41. Bpngkot	240	341	581
21. Barn Huatoong	455	473	928	42. Paniadchang	481	466	947

**Not specify the communities
Male 25,876
Female 31,030
Total 56,906

Source : Registration and Citizen ID Section, Office
of the Chief administrator of Pattaya city
May 2019

Social Work and Social Welfare

Pattaya City sets up the office of social development to coordinate with other social work organizations to help one who is disadvantaged, elders and children in many aspects. There is a mobile public health to service people in the community including promoting the activities to help people in the community to help themselves.

Pattaya City also copes with the problems of beggars and young tramps to save Pattaya City Image as follows:

- Misbehaved children in Pattaya City area will be sent to Eastern Child Protection Center, Rayong Province.
- The tramps and beggars who are Thai will be sent to Homeless Care Center, Department of Public Welfare, Pakkred, Nontaburi Province.
- The aliens, mostly Cambodian, Laotain, and Burmese who illegally live in Thailand will be sent to Pattaya Immigration Office.
- The elders who can't help themselves will be sent to Banglamung Foster Home.
- There is also assistance for children, women, elders, disables and AIDS patients.
- In 2019 fiscal year, 10,340 elders have received their pensions for living.
- In 2019 fiscal year, 1,257 disables have received their pensions for living.
- In 2019 fiscal year, 320 AIDS patients have officially registered.

Source : Department of Social Development, Pattaya City

February 2019

House for Elders, Tramps and Other Supports

Types of Assistant Units	Place/Telephone
1. The temporary house for children and women who have problems and are in troubles	Chonburi House for Children and Family, Chonburi Province : Tel. 038-240220
2. The place for protecting and assisting homeless people and beggars.	The Center of Protecting Homeless People, Chonbuir : Tel 038 - 234430
3. The place for helping and protecting children between 7 – 18 years old.	Banglamung Male Children Foster Home : Tel 038-241373

4. The place for supplying appropriate social welfare following Protecting Children Act 2003.	Chonburi Center of Child Development. Tel. 038-234 402
5. The place for looking after female disables with 18 years old up.	“Karoonyawet” Foster Home for Disables
6. The place for looking after elders’ mover 60 years old.	Banglamung Development Center for Managing Elderly Welfares : Tel. 038-241121, 038-241857

4. Education

Pattaya City takes an account on the importance of education and development of education to meet quality standards, so Pattaya City has established 11 schools under Pattaya City together with 2 child-care centers located in different areas of the city including Koa Larn. 10 schools teach students from Pratomsuksa 1 – 6 (Grade 1 – 6) and Mattayomsuksa 1 – 3 (Grade 7 – 9) and the other one is as a demonstration school teaching students until Mattayomsuksa 6 (Grade 10 – 12) to help students to sit the entrance examination. There are both government schools and private schools in Pattaya City as follows:

Schools under Pattaya City

1. Two Pattaya City pre-school child training centers:
 - Wat Chaimonkol pre-school child training center, South Pattaya Street, Nongprue, Tel. 038-420436
 - Darulibadha Mosque pre-school child training center, Sukumvit Road Nongprue, Tel. 038-716796
2. Eleven Pattaya City Schools teaching students from kindergarten level to Mattayomsuksa level as follows:

2.1 Muang Pattaya School 1. It is located at 58 Sukumvit Road, Nongplalai, Banglamung, Chonburi established since 1955 teaching students from pre-school child level to Mattayomsuksa 3 (Grade 9). The numbers of students in 2018 were 777 students with 25 classrooms. The rate of students per one classroom is 32. The telephone number is 0-3822-1267.

2.2 Muang Pattaya School 2. It is located at 5 Sukumvit Road, Narklua, Banglamung, Chonburi close to Banglamung District Office established since 1923 teaching students from pre-school child level to Mattayomsuksa 3 (Grade 9) with 1,251 students, 39 classrooms. The rate of students per one classroom is 33. The telephone number is 66-38 221264.

2.3 Muang Pattaya School 3. It is located at 250 Sukumvit Road, Narklua, Banglamung, Chonburi established since 1936 teaching students from pre-school child level to Mattayomsuksa 3 (Grade 9) with 1,363 students, 39 classrooms. The rate of students per one classroom is 35. The telephone number is 66-38 222265.

2.4 Muang Pattaya School 4. It is located at 23/4 Sukumvit Road, Nongplalai, Banglamung, Chonburi established since 1938 teaching students from pre-school child level to Mattayomsuksa 3 (Grade 9) with 987 students, 28 classrooms. The rate of students per one classroom is 36. The telephone number is 66-38 429266.

2.5 Muang Pattaya School 5. It is located at 15 Sukumvit Road, Nongplue, Banglamung, Chonburi established since 1951 teaching students from pre-school child level to Mattayomsuksa 3 (Grade 9) with 1,518 students, 45 classrooms. The rate of students per one classroom is 34. The telephone number is 66-38 429268.

2.6 Muang Pattaya School 6. It is located at 58 Soi Wat Tamsamakee, Nongplue, Banglamung, Chonburi established since 1957 teaching students from pre-school child level to Mattayomsuksa 3 (Grade 9) with 1,448 students, 36 classrooms. The rate of students per one classroom is 41. The telephone number is 66-38 429296.

2.7 Muang Pattaya School 7. It is located at 87 Sukumvit Road, Nongplue, Banglamung, Chonburi established since 1955 teaching students from pre-school child level to Mattayomsuksa 3 (Grade 9) with 2,188 students, 66 classrooms. The rate of students per one classroom is 34. The telephone number is 66-38 231796.

2.8 Muang Pattaya School 8. It is located at 26 Sout Pattaya Road, Nongplue, Banglamung, Chonburi and established since 1943 teaching students from pre-school child level to Mattayomsuksa 3 (Grade 9) with 2,129 students, 65 classrooms. The rate of students per one classroom is 33. The telephone number is 66-38 429295.

2.9 Muang Pattaya School 9. It is located at 152 Pattaya - Naklua Road, Nongplue, Banglamung, Chonburi established since 1955 teaching students from pre-school child level to Mattayomsuksa 3 (Grade 9) with 1,648 students, 49 classrooms. The rate of students per one classroom is 34. The telephone number is 66-38 225249.

2.10 Muang Pattaya School 10. It is located at 209 Naklua, Banglamung, Chonburi and it has been established since 1955 teaching students from pre-school child level to Mattayomsuksa 3 (Grade 9) with 421 students, 15 classrooms. The rate of students per one classroom is 29. The telephone number is 66-38 429941.

2.11 Muang Pattaya School 11. It is located at 37/66 Moo 6 Naklua, Banglamung, Chonburi and established since 2009 teaching students from pre-school child level to Mattayomsuksa 3 (Grade 9) with 1,244 students, 33 classrooms. The rate of students per one classroom is 37. The telephone number is 66-38 420911.

**The 2018 Statistic Showing the Numbers of Students Studying in Schools of
Pattaya City**

Schools of Pattaya City	Pre-school Level		Pratomsuksa Level (G 1 – G 6)		Mattayomsuksa Level (G 7 – G 12)		Total Amount	
	Rooms	Students	Rooms	Students	Rooms	Students	Rooms	Students
Muang Pattaya 1	6	158	12	354	7	265	25	777
Muang Pattaya 2	10	287	23	765	6	199	39	1,251
Muang Pattaya 3	9	253	21	782	9	328	39	1,363
Muang Pattaya 4	7	222	15	547	6	218	28	987
Muang Pattaya 5	9	256	24	904	12	358	45	1,518
Muang Pattaya 6	9	308	18	785	9	355	36	1,448
Muang Pattaya 7	15	433	34	1,194	17	561	66	2,188
Muang Pattaya 8	8	200	42	1,448	15	481	65	2,129
Muang Pattaya 9	9	304	31	1,040	9	304	49	1,648
Muang Pattaya 10	6	138	6	219	3	64	15	421
Muang Pattaya 11	0	0	0	0	33	1,244	33	1,244
Total	88	2,559	226	8,038	126	4,377	440	14,974

Source: Bureau of Education, Pataya City

February 2019

Schools under Secondary Education Service Area Office 38

1. Poetisampanpittayakarn School, teaching students from Mattayomsuksa 1 to 6 (Grade 7 – 12) located on Pattaya – Naklua Road, Naklua, Tel. 038-225211
2. Banglamung School, teaching students from Mattayomsuksa 1 to 6 (Grade 7 – 12) located on Sukumvit Road, Naklua, Banglamung District Tel. 038-221620

Schools under Office of Private School Commission

There are 17 private schools teaching students from kindergarten level and Mattayomsuksa level as follows:

Kindergarten Level

- Anubarn Karnjana, Moo 5, Pattaya – Naklua Road Naklua, Banglamung, Tel. 038 – 428938.

- Anubarn Boonpueng, Pattaya – Naklua, Naklua, Banglamung, Tel. 038-221232.
- Anubarn Sotpattana, 384 Moo 4, Sukumvit Road, Naklua, Banglamung, Tel. 038 – 42346
- Anubarn Wayupak, 159/113 Moo 6, Naklua, Banglamung, Tel. 084 – 7795554

Kindergarten and Primary Level

1. Aksorn Pattaya School. Norngprue, Banglamung, Tel 038 – 374532
2. Aksorn Teppasit School. Moo 11 Norngprue, Banglamung, Tel. 038 – 412118
3. Tantraluk School. Moo 6, Pattaya No.3 Road, Naklua, Banglamung, Tel. 038 – 422636
4. Burapapattanasart School.Moo 13 Sukumvit Road, Norngprue, Banglamung, Tel. 038 – 420848
5. Wuttichot School. Moo 6, Sukumvit Road, Naklua, Banglamung, Tel. 038 – 428849
6. Pattaya Arunotai School. Moo 9 Central Pattaya Road, Norngprue, Banglamung, Tel. 038 – 421316

Kindergarten and Secondary Level

1. Julatep School. Moo2 Sukumvit Road, Naklua, Banglamung. Tel. 038 – 221418
2. Udonsuksa Demonstration School. 54/41 Sukumvit Road, Norngprue, Banglamung, Tel. 038 – 232902
3. Barnrod fai School. Moo 6 Norngprue, Banglamung, Tel. 038 – 428615
4. Mariwit School. Sukumvit Road, Naklua, Banglamung, Tel. 038 – 222477
5. Mahartai School for the Blinds Pattaya. 285/103 Pattay-Naklua Road,
6. Naklua Banglamung, Tel. 038 – 225479
7. Pattaya International School/Pattaya International School/82 Moo 6 Sukumvit Road, Naklua, Banglamung, Tel 038 – 428849

Primary and Secondary Level

1. Asornsuksa. Moo 5 Pattaya – Naklua Road, Naklua, Banglamung, Tel. 038 – 428938

Vocational College Level

School under the Commission of Vocational Education

1. Pattaya Technic College. Teaching certificate and higher certificate level located at 15/17 Soi Watnornkateyai, Naklua, Banglamung, Tel 038-222118

School/College under Office of Private School Commission

1. Technology Pattaya Commercial College. (Certificate level). 119 Pattaya – Naklua Road, Naklua, Banglamung, Tel. 038-423938
2. Technology Pattaya Business Administration College. (Higher Certificate Level). 119 Pattaya – Naklua Road, Naklua, Banglamung, Tel. 038-423938
3. Aksorn Pattaya Technology College. (Certificate and Higher Certificate Level). Moo 11 Teppasit Road, Norngprue, Banglamung, Tel. 038-300164-5
4. Technology Kingston Pattaya College. (Certificate and Higher Certificate Level) 297/1-5 Moo 6 Naklua, Banglamung, Tel. 038-422126
5. Technology Mahartai Pattaya College. (Certificate Level). 440 Moo 9 Sukumvit Road, Norngprue, Banglamung. Tel. 038-716247-9

University Educational Institutes nearby

1. National Institute of Development Administration (NIDA). Located at the College of Ministry of Interior, Banglamung, Banglamung, Tel 038-240245 (outside the area of Pattaya City)
2. Thammasart University, Pattaya Center. Located at 39/4 Moo 5 Pong, Banglamung, Chonburi, Tel. 038-259050-5
3. Kasetsart University, Au-udom Campus. Located at 199 Moo 6 Tung sukla Siracha, Chonburi, Tel. 038-354580-6
4. Eastern Technology, Bangpra Campus. Located at 43 Moo 6 Bangpra, Siracha, Chonburi, Tel. 038-358201
5. Burapha University. Located at 169 Longhard Bangsaen Road, Saensuk, Muang, Chonburi, Tel. 038-102222. (outside the area of Pattaya City)
6. Sripatum University, Chonburi Campus. Located at 79 Bangna-Trad Road, Klongtamru, Muang, Chonburi, Tel. 038-743690-9. (outside the area of Pattaya City)

5. Important Local traditions

1. Making merit on New Year's Day	31 Dec. – 1 Jan.
2. Makhabucha (Religious event)	19 Feb.
3. Wanlai Naklua (Songkran Festival)	18 Apr.
4. Wanlai Pattaya (Songkran Festival)	19 Apr.
5. Kong Kaw Naklua	20 Apr.
6. Kong Kaw Norngyai	20 Apr.
7. Visakabucha (Religious event)	18 May
8. Arsarnhabucha (Religious event)	16 Jul.
9. Buddhist Lent (Religious event)	17 Jul.
10. Pattaya City Establishment Day	29 Nov.
11. Taksin the Great Day	28 Dec.

6. Sports and Leisure

There are many places to play sports and have leisure in Pattaya City for people and tourists. Most of these places are located in schools in Pattaya City including public parks as follows:

- 8 multi purposes sport stadiums
- 4 football fields
- 11 basketball fields
- 10 trakraw courts
- 2 swimming pools
- 16 children playgrounds
- 1 indoor stadium -

7. Public Health

There are 5 hospitals for servicing patients in the area of Pattaya City. These hospitals are government hospital, private hospital and hospital under Pattaya City.

➤ Government Hospital

1. Banglamung Hospital. It is located at 669 Moo 5, Pattaya – Naklua Road, Naklua, Banglamung, Chonburi Province 20150. The telephone number is 0-3842-3835, 0-3842-6702, 0-3872-6220.

- Number of beds 260

Medical Staff are:

- Physicians	53
- Dentists	11
- Professional Nurses	314
- Pharmacists	27
- Thai Medical Physicians	2
- Dental care officers	10
- Medical Radiologists	3
- Physiotherapists	8
- Psychologists	4
- Occupational Therapists	2
- Nutritionists	2
- Special worker	1
- Public health personnel	40
- Others	

Number of patients receiving medical treatment in 2018 are as follows:

- In patients	21,132
- Out patients	163,755
- Frequent visits	563,259 times
- Accident	25,426 cases : year

Top 5 diseases that are mostly cured are:

1. AIDS
2. High Blood Pressure
3. Cold
4. Diabetes
5. Gastritis and Inflammatory bowel disease

Source : Banglamung General Hospital

February 2019

➤ Private Hospitals

There are 3 private hospitals in Pattaya City as follows:

1. **Bangkok Pattaya Hospital.** It is located at 301 Moo 6 Sukumvit Road, Naklua, Banglamung, Chonburi 20150. The telephone number is 0-3825-9999.

Number of beds 300

Medical staff are:

- Physicians 129 and 339 part time
- Dentists 13 and 32 part time
- Nurses 467 and 66 part time
- Pharmacists 38 and 21 part time
- Other staff 395

Number of patients receiving medical treatment in 2018 are as follows:

- In patients 19,065
- Out patients 149,108
- Accidents 26,140 cases : year

Top 5 diseases that are mostly cured are:

1. Lung and Respiratory Disease
2. Injury and poison intake
3. Digestive system disease
4. Inflection disease
5. Muscle and bone disease

Source : Bangkok Pattaya Hospital

February 2019

2. **Pattaya Memorial Hospital.** It is located at 328/1 Moo 9 Central Pattaya Road, Norngprue, Banglamung, Chonburi 20150. The telephone number are 038-488777, 038-427742

Number of beds 50

Medical staff are:

- Physicians 10
- Dentists 2
- Nurses 45

- Pharmacists 6
- Medical technology 6
- Other officers 174

Number of patients receiving medical treatment in 2018 are as follows:

- In patients 12,517
- Out patients 28,207
- Frequency of visits 75,741 times
- Accidents 1,703 cases : year

Top 5 diseases that are mostly cured are:

1. Sudden Diarrhea
2. Inflected Up-Respiratory
3. High Blood Pressure
4. Throat Inflammation
5. Diabetes not depending on Insulin

Source : Pattaya Memorial Hospital

February 2019

3. Pattaya Inter Hospital. It is located at 255/4 Moo 9 Soi Pattaya 4, Pattaya No.2 Road, Norngprue, Banglamung, Chonburi 20150. The Telephone numbers are 038-428374 and the fax number is 038-422773.

Number of beds 80

Medical staff are:

- Physicians 54
- Dentists 3
- Nurses 28
- Pharmacists 14
- Other officers

Number of patients receiving medical treatment in 2018 are as follows:

- In patients 1,958
- Out patients 37,223
- Frequency of visits 39,208
- Accidents 824 cases : year

Top 5 diseases that are mostly cured are:

1. Breath system disease
2. Sudden Diarrhea
3. Skin Disease
4. Muscle and Bone Diseases
5. Urinary System Disease

Source : Pattaya Inter Hospital

February 2019

➤ The Hospital under Pattaya City

1. Pattaya City Hospital. It is located at 261/10 Moo 10 Soi Buakao, Central Pattaya Road, Norngrue, Banglamung, Chonburi 20150. The telephone number is 038-103900

The number of beds 110

Medical staff are:

- Physicians (Government Office) 5 (with 15 physicians form Thonburi Hospital)
- Nurses (Government Office) 19 (with 73 nurses form Thonburi Hospital)
- Dentists (Government Officers) 4
- Pharmacists 5 (with 8 Pharmacists Thonburi Hospital)
- Physiotherapists 3 with 6 Physiotherapists from Thonburi Hospital)
- Medical Radiologists 2 (with 6 Medical Radiologists form Thonburi Hospital)
- Medical technology 2 (with 8 Medical Technologies from Thonburi Hospital)
- Other Officers

Number of patients receiving medical treatment in 2018 are as follows:

- In patients 6,820
- Out patients 262,807
- Frequency of visits 269,667 times

- Accidents 7,743 cases : year

Top 5 diseases that are mostly cured are:

1. Chronic Renal Failure
2. High Blood Pressure
3. Flu
4. Diabetes Type 2
5. Gastritis and Inflammatory bowel disease

Source : Pattaya City Hospital

February 2019

Public Health Center Service. It is located on Soi Buakhao, Central Pattaya Road. The telephone number is 0-3842-0823 . The physicians and nurses are the same ones as Pattaya City Hospital.

Basic Community Public Health Center of Pattaya City

There are 29 Basic Community Public Health Centers of Pattaya City as follows:

1. Tappaya Basic Community Public Health Center
2. Basic Community Public Health Center at Naklua Old Market 1
3. Basic Community Public Health Center at Naklua Old Market 2
4. Roilang Basic Community Public Health Center
5. Teppasit Basic Community Public Health Center
6. Torng-or Priest House Basic Community Public Health Center
7. Ronmaikheed Basic Community Public Health Center
8. Wat Tamsamakkee Basic Community Public Health Center
9. Central Pattaya 402 Basic Community Public Health Center
10. Wat Bunkanjanararm Basic Community Public Health Center
11. Basic Community Public Health Center at Korpai Community 1
12. Basic Community Public Health Center at Korpai Community 2
13. Basic Community Public Health Center at Arunotai Community 1
14. Basic Community Public Health Center at Arunotai Community 2
15. Laemrachawet Basic Community Public Health Center
16. Basic Community Public Health Center at Norngyai Community 1
17. Basic Community Public Health Center at Norngyai Community 2

18. Chumsai Community Basic Community Public Health Center
19. RungruengBasic Community Public Health Center
20. Watpoe Basic Community Public Health Center
21. Kratinglai Basic Community Public Health Center
22. Norngpankae Basic Community Public Health Center
23. Huatoong Basic Community Public Health Center
24. Rungland Basic Community Public Health Center
25. Kaotalo Basic Community Public Health Center
26. Bongkot Basic Community Public Health Center
27. 5 Tanwa (5 December) Basic Community Public Health Center
28. Wat Chaimonkol Basic Community Public Health Center
29. Koa Larn Basic Community Public Health Center

➤ **Public Health Volunteers : 248 volunteers**

There are 29 Basic Community Public Health Centers of Pattaya City and there are also public health volunteers in every community. There is a management of mobile service of public health services. However, this service is not sufficient to serve the people's desires as there are four times of unregistered population more than registered ones moving into the city to earn their livings.

Source : Office of Public Health, Pattaya City

February 2019

➤ **Clinics.** There are 321 clinics which are:

- 147 Medical Clinics
- 20 Specific Medical Clinics
- 113 Dentists
- 3 Nursing and Midwife Clinics
- 9 Physical therapy Clinics
- 8 Medical Technician Clinics
- 12 Thai Medical Treatment Clinics
- 2 Applied Thai Medical Treatment Clinics
- 6 Healing Clinics
- 1 Poly clinic

- **Drugstores.** There are 471 drugstores which are :
 - 424 Modern medicine stores
 - 17 Traditional medicine stores
 - 5 producers of traditional medicine
 - 23 ready-packed modern medicine stores
 - 2 medicine for animals
- 38 Veterinarian Clinics
- 6 Animal Hospitals

Source : Public Health Office of Banglamung District and
Banglamung Livestock Office

February 2019

Pattaya City Hospital

It is located at 261/10 Moo 10 Soi Buakao, Norngrue, Banglamung, Chonburi 20150. The telephone number is 038-103900.

Due to the sharp increasing number of the population together with tourists, Pattaya City has to provide sufficient public health services to support needs of those. Moreover, there is only one government hospital and some public health centers in the area. This is not enough to service local people and tourists. Even though there are some nearby government hospital; Somdej Na Siracha, Siracha District and in Sattahip District, it is quite far to go especially at the critical moment. There are 500,000 people and 5 million tourists that Pattaya City must give and account on looking after them. Hence, there is the establishment of the hospital that can provide 500 beds to patients and help them to save their expenses for hot going to private hospitals.

Pattaya City takes an account on this problem and realizes the necessity of taking care of people's health in the area. This also brings Pattaya city to achieve the administration of the 9th strategy focusing on health and environment aiming to make local people be well-protected including responding for 14 urgent policies which makes Pattaya City to be a pleasant city. According to "Doctor House Visit Project and Pattaya City Hospital with 20,000 beds, Pattaya City has built Pattaya City Hospital with 110 beds as a government hospital with service standard to serve people with medical care and health care since 2012. This hospital aims to take care of people's health and protect diseases efficiently servicing from a primary care to a secondary care all kinds of people.

Vision

"Pattaya City Hospital cares of services provided by special physicians with full modern technology and worth paying within 2017"

Philosophy

“Quality, Standard, Ethic and Moral”

Mission

“Fantastic servicing medical care, creating service users’ satisfaction by a group of moral personnel and response to society together with excellent academics and continuous development”

Departments of Service

In accordance with the potential of thorough service covering looking after people and tourists’ health, Pattaya City Hospital has operated various departments to serve curing as follows:

- Emergency Department
- Out-patient Department
- In-patient Department
- Intensive Care Unit
- Internal Medicine Department
- Pediatric Department
- Op-Gyn Department
- General Surgery Department
- Dental center
- Rehabilitation Department

Koa Larn Health Promotion Hospital

Vision

“Care of curing, well-serviced and quality of transfer”

Mission

- Looking after and take care of health and accident efficiently
- Building up good health path to protect diseases and support last long good health
- Developing public health personnel to have quality in cooperative jobs
- Developing organization and administrative system, and standard health academic

Goals

- Making a network and cooperation in looking after health and transferring system continually and sustainably.
- Becoming a standard organization and being acceptable internationally.
- People and tourists are satisfied and reliable on the standard services of EMS towards bed to bed.
- Building up community health system following sufficiency economy.
- People have proper health behaviours and have a good way of disease protection and the rate of illness reduces.

8. Public Danger Release and Protection

Land Public Danger and Fire Protection

✘ There are 3 fire stations as follows:

- Naklua Area Fire Station. The responsible area is from Kratinglai Canal to

North Pattaya Road.

- Pattaya Area Fire Station. The responsible area is from North Pattaya Road to Teprasit Road.

- Jomtian Area Fire Station. The responsible area is from Teprasit Road to the end of Pattaya City border at Najomtian.

✘ The statistic of fire from 1st January – 31th December 2018 : 34 times

✘ Numbers of fire protection volunteers of Pattaya City : 1,488 volunteers

✘ Numbers of training and demonstration on Fire for : 469 times
for trading places, schools, hospitals, foundations and etc.

Source : Section of Land Danger Protection

February 2019

The Mission to Protect Sea and Coastal Dangers

The mission is to protect, rescue in the sea, and seek for ones facing dangers in the sea including security guard to help both Thai and foreign tourists who swim in the area and face dangers. The other missions is to assist service tour boat owners in the water area of Pattaya City as Pattaya Beach, Jomtian Beach Wong-amart Beach, and the area of Koa Larn. The first aids is also provided to tourists having injury from sharp items or all kinds of sea animals in the area.

There are 5 sea and coastal danger rescue centers as follows:

1. Sea and Coastal Danger Rescue Center at Najomtian area
2. Sea and Coastal Danger Rescue Center at Pattaya area
3. Sea and Coastal Danger Rescue Center at Wong-amart area
4. Sea and Coastal Danger Rescue Center at Sukawadee area
5. Sea and Coastal Danger Rescue Center at Kratinglai area

There are 34 officers working in Sea Danger Protection Section.

Source : Sea Danger Protection Section of Pattaya City

February 2019

The Safety of Life and Assets in 2008
4 of Criminal Cases from 1 January – 31 December 2018

Types of Criminal Cases	Year 2018		
	Cases	Arrested	%
1. The cases on life, physical and sex	97	85	84.54
2. The case on assets	385	286	70.91
3. Special cases	120	111	88.33
4. The cases due to the state laws (gun, gambling, drugs, etc.	3,844	3,840	99.90

Source : Pattaya Police Station, February 2019

The Statistic Showing the Complaint Made Discriminated by Tyoe in 2018

Types	Numbers of Cases	%
1. Making mistakes in public areas	155	2.11
2. Unpicked up waste	1,623	22.09
3. Gov. and Pattaya City Officers	68	0.92
4. Other officers	63	0.86
5. Traffic	264	3.59
6. Informing	18	0.24
7. Admiring to job performance	49	0.67
8. Road and path	463	6.30
9. Drainage pipes	477	6.49
10. Pattaya City image	534	7.27
11. Public utility (electricity, water, telephone)	1,384	18.84
12. Environment and pollution	793	10.79
13. Trees and public parks	328	4.46
14. Disturbance	406	5.53
15. Suggestions	4	0.05
16. Buildings and constructions	327	4.46
17. Drugs	3	0.04
18. Others	389	5.29
Total	7,348	100.00

Source : Center of Solving Problem and Receiving Complaint, Pattaya City

October 2018

Natural Resources and Environment

1. Water Resources

There are not any natural water resources in Pattaya City, so it is necessary to depend on the rainfall and reservoirs in Banglamung District and from man-made reservoir for consumption, agriculture and industry. There are water reservoirs as follows:

- Huaykhunjit Reservoir at Takiantia Sub-district
- Marbprachun Reservoir at Pong Sub-district
- Charknork Reservoir at Huay Yai Sub-district
- Klangdong Reservoir at Takiantia Sub-district

There are 4 canals in Pattaya City as follows:

- Nokyarng Canal
- Peekplub Canal
- Naklua Canal
- South Pattaya Canal

2. Forest

There are 9 National Reserved Forests in Chonburi with the area of 906,396 rai which are Banlamung Reserved Forest with the area of 103,075 rai, Kao Kiew Reserved Forest with the area of 55,625 rai, Tarboonmee – Bortong Reaeerved Forest with the area of 170,625 rai, Klongtakian Reserved Forest with the area of 378,750 rai, Daeng and Chumchon Klang Reserved Forest with the area of 160,625 rai, Kao Chompoo Reserved Forest with the area of 28,589 rai, Kaopu Reserved Forest with the area of 5,482 rai, Kao Hindrad and Kaopai Reserved Forest with the area of 1,500 rai. These reserved forests are categorized into 3 types.

1. Reserved forest area (Zone C) with the area of 196,864 rai
2. Economical forest area (Zone B) with the area of 705,182 rai
3. Forest suitable for agriculture (Zone A) with the area of 4,350 rai.

3. Coastal Natural Resources

* Coral reefs. Coral reefs are found in 2 places in Chonburi; at the Group of Koa Larn, Pattaya City and Koa Samaesarn in Sattahip where amateur divers like to practice diving there.

* Sea grass resource. The important places where sea grass resources are found are the area of Koa Kram and Koa Pra in Sattahip Bay area. The three kinds of sea grass found are *Halophila decipiens*, *Halophila Minor* and *Ruppia Maritime*.

5. Environment Condition

Condition of Water/Air

Most of water resources in Pattaya city are seawater. Generally, the standard criteria of a seawater resource suitable for swimming and water sports must contain less bacteria than 1,000 MPN / 100 mgs. The seawater resources of Pattaya City are divided into 4 areas that are Jomtien area, Pattaya area, Naklua area and Koa Larn area. The quality of the seawater in these areas are in standard criteria.

Water Drainage and Waste Water Treatment

In 2018 there were 82,000 m³/day of waste water and there were 82,000 m³/day of treated waste water of which 6.60 of BOD value in the canals and main water drainage ways. There was 30% of the area that was flooded. The average of the long period of the flood was 2 hours in October 2018.

Nowadays, there are two waste water treatment stations which are :

1. Waste water treatment station located at Soi Boonkanjana with the area of 13 rai providing the service covering 7.5 km² in the area of Narjormtien with “Activated Sludge” system; Step – Feed Biological Nitrogen Removal.
2. Waste water treatment station located at Soi Norngyai with the area of 80 rai providing the service covering 36 km² in the area of Pattaya City and Naklua with “Activated Sludge” system; Step – Feed Biological Nitrogen Removal.

Waste and Garbage

Pattaya City has hired the private organization to manage collecting waste, hazardous waste and garbage in the community areas of Pattaya City

Table Showing the Amount of Waste in Pattaya City in 2018

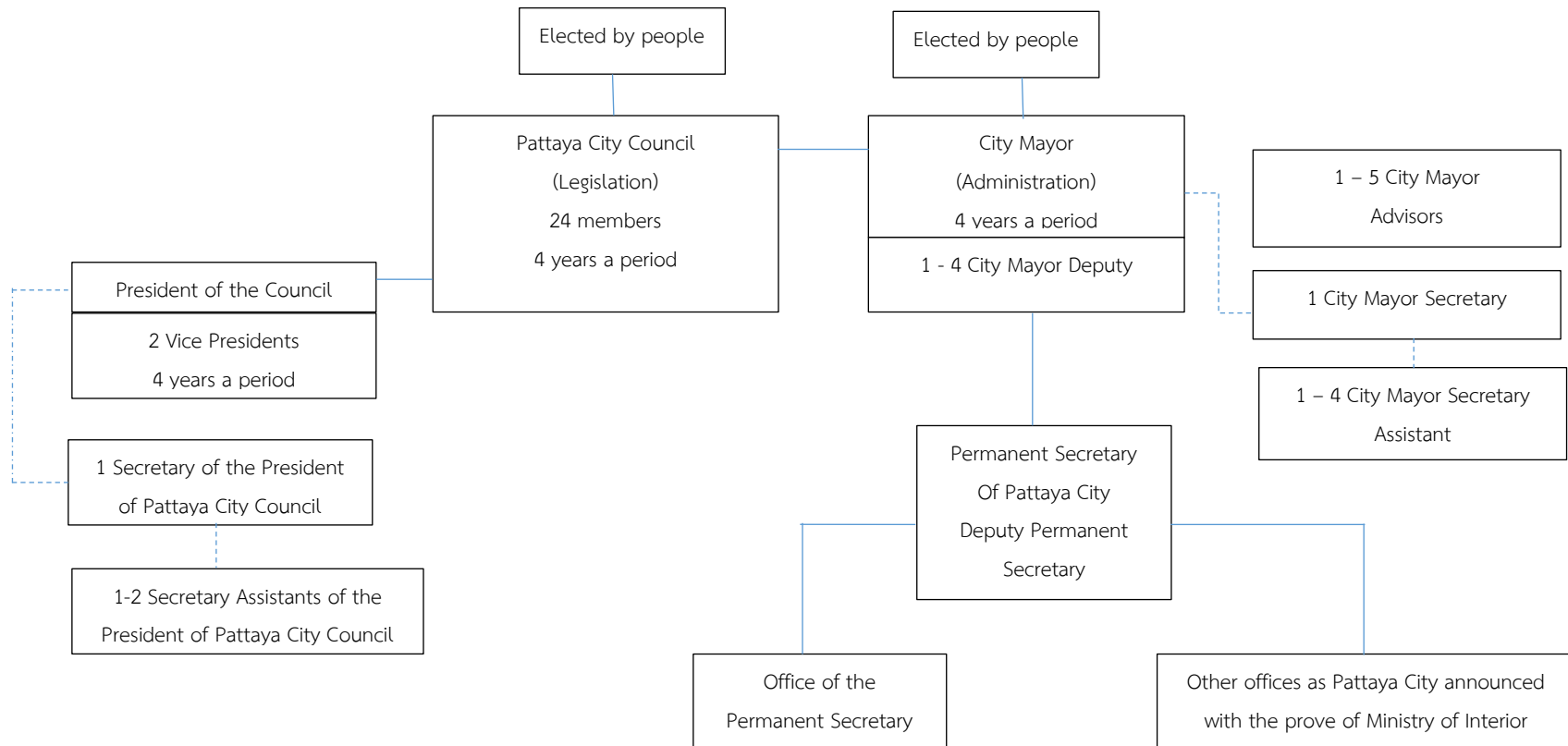
Month	Amounts of Waste (Ton)
January	14,652.64
February	13,355.10
March	14,781.52
April	13,536.38
May	14,720.35
June	13,257.53
July	13,858.48
August	13,499.22
September	12,512.74
October	13,392.72
November	12,815.25
December	13,751.27
Total	164,133.20

Source : Bureau of Environment, Pattaya City

May 2019

Politic and Administration

Structure of Pattaya City Administration by the Pattaya City Administration Act 1999





Politic and Administration Aspect

1. The Structure and Authority in Administration

Following the Act of Pattaya City Administration 1999 and the second Improved Act 2009

✠ The Establishment of Pattaya City ✠

Pattaya City is an Established under Section 7 as a local government unit with the area as appearing before the proclamation of the Act and the status of Pattaya City is as a corporate and the correction of the city border must be declared as a decree.

✠ The Administration of Pattaya City ✠

According to the Administration of Pattaya City Section 8, the administration of Pattaya City are as follows:

1. Pattaya City council
2. Pattaya City Mayor

✠ Pattaya City Council ✠

Pattaya city council consists of twenty-four members, elected by the people who have a right to vote (one with the age from 18 years old) in an election in Pattaya. The period of Pattaya City council lasts four years beginning from the date of the election. When the office becomes vacant because of the expiration of the term of Pattaya City council or the dissolution of Pattaya City council or there is a dissolution of Pattaya City council in accordance with Section 19 paragraph three, an election must be held within forty-five days from the date of the expiration of the federation of Pattaya City Council or the date of the dissolution of Pattaya City Council, depending on what case is.

When the member position becomes vacant, the election to substitute the vacant position within forty five days of the date on which the vacancy is, except for the period of Pattaya city council remaining less than one hundred and eighty days. The new member elected to substitute the vacant position will last long as the present period of Pattaya City

left. In case of members of Pattaya City council are vacant more than the full number of all members, the Provincial Governor will report to the Minister of Ministry of Interior to consider the dissolution of Pattaya City Council.

One of elected members of the Council of Pattaya City will be elected to be the President of the Council, and other two will be Vice Presidents of the Council of Pattaya City. This will be at the first period of the meeting and then proposing the elected members for the Provincial Governor to appoint.

The President of the Council may appoint a council secretary and a council secretary assistant to assist doing all council jobs, but not exceed the numbers of Pattaya Vice Presidents of the council.

✠ Pattaya City Mayor ✠

Pattaya City Mayor is directly elected by the people in an election area of Pattaya City. Pattaya City Mayor period will be a four-year term beginning from the date of being elected and will be able to hold the position not more than two consecutive terms. In case of the vacancy of Pattaya City Mayor, the election must be held within forty five days from the date of the official vacancy. The previous Mayor of Pattaya city must transfer all responsibilities to the new Mayor within seven days beginning from the date of the result of the election of Pattaya City Mayor announced.

Pattaya City Mayor may appoint Deputy Pattaya City Mayor, but not more than four people to assist doing jobs as Pattaya City Mayor assigns.

The Duties of Pattaya City Mayor

Pattaya City Mayor must follow the duties as follows:

1. Defining the policy and be responsible for the administration of the affairs of Pattaya City, that is in compliance with the laws and ordinance policy.
2. Giving permission and approve all Pattaya City official affairs.

3. Appointing and dismissing Deputy Pattaya City Mayor, Pattaya City secretary, Pattaya city assistant secretary, the chairman of the advisory of Pattaya City Mayor or board of advisors.

4. Regulating Pattaya City rules to keep Pattaya City in order.

5. Performing other duties as assigned by the Cabinet, the Prime Minister, the Minister or the Provincial Governor or follow the missions prescribed by the law of the Mayor of Pattaya City or the Municipal Council Acts.

Pattaya City Mayor may appoint Pattaya City Mayor secretary and Pattaya City Mayor secretary assistant, but not more than the numbers of Deputy Pattaya City Mayor and may appoint the expert to be the president of the advisory unit and advisory unit members, but not exceed 5 members to assist doing jobs as Pattaya City Mayor assigns.

◀ Pattaya City Administration Regulations ▶

Pattaya City Mayor controls and takes responsibility for the administration of the affairs of Pattaya City and commands all Pattaya City staff and employees.

Pattaya City Administration is divided into sections as follows:

1. Office of Pattaya City Manager.
2. Other sectors as Pattaya City Mayor has announced under the approval of the Ministry of Interior.

◀ Pattaya City Manager ▶

Pattaya City Manager is the person who commands and controls all of Pattaya City employees who are in lower levels than Pattaya City Mayor and permanent officials of Pattaya City in accordance with the policies and other duties as specified by the law or assigned by Pattaya City Mayor.

According to the duty performance, Pattaya City Mayor, Deputy Pattaya City Mayor and Pattaya City Officials are the officials under the code of law.

◀ The Authority of Pattaya City ▶

Following section 62 subjecting to the provisions of the law, Pattaya City obtains the authority to proceed in Pattaya City area as follows:

1. Keeping peace and calmness.
2. Supporting the promotion and preservation of the quality of the environment and natural resources.
3. Protecting and maintaining public properties.
4. Managing city planning and controlling all constructions.
5. Managing housing and improving slum.
6. Managing and controlling traffic.
7. Keeping the city clean and tidy.
8. Managing waste and sewage and waste water treatment.
9. Providing clean water or the water supply system.
10. Managing controlling of a market place, harbors, and car parks.
11. Controlling hygiene and safety of public health focusing on food services, cleanness of theatre and other entertainment spots.
12. Controlling and promoting tourism.
13. Maintaining arts, custom, local wisdom and good cultures of locality.
14. Performing other functions as prescribed by the laws of the municipality or of Pattaya City.

★ Plan and Step of Decentralization Following Act ★

Section 16

According to Decentralization Act, Section 16 local government units must perform following functions including Pattaya City:

1. Managing one own local development plan.
2. Providing and maintaining transportation on land, water and floodway.

3. Providing and controlling market places, harbor, ferry pier and car park.
4. Building infrastructure and other constructions.
5. Providing public facilities.
6. Managing occupation promotion and training.
7. Commercializing and investment promoting.
8. Promoting tourism.
9. Managing education.
10. Managing social welfare and developing the quality of life of children, women, elderly and the disables.
11. Maintaining arts, custom, local wisdom and good culture of locality.
12. Improving slums and managing housing.
13. Providing and maintaining recreational areas.
14. Promoting sports.
15. Promoting democracy, equity and rights and liberties of the people.
16. Promoting the participation of local people to develop local area.
17. Keeping the area clean and tidy.
18. Managing waste and sewage and waste water treatment.
19. Caring of public health, family health and providing medical treatment.
20. Providing and controlling the cemetery and funeral areas.
21. Controlling animal farms.
22. Providing and Controlling slaughter houses.
23. Keeping hygiene, tidiness and sanitation of theatres and public places.
24. Managing and maintaining the utilization of forests, land, natural resources and the environment.
25. Managing city planning.
26. Managing transportation and traffic engineering.
27. Looking after public places.
28. Controlling building sites.
29. Protecting and relieving Public hazards.

30. Keeping peace and calmness including supporting the prevention of security of life and property damage.

31. Providing any other activities that are beneficial to the local people in accordance with the board declaration.

Official Offices of Pattaya City

❖ **Department of Pattaya City Manager**

This office is responsible for general official affairs of Pattaya City, cooperate with others, house registering and citizen ID, the jobs as Pattaya City secretary and official administrators, Pattaya City Council job, solving problems as requested aggressively, keeping peace, protecting drugs and disasters, protecting dangers and fire, collecting officers, cooperating with other government sectors and private sectors, assisting victims of sea and land dangers, promoting the center of personnel development, and perform other duties not mentioned and specified in the declared offices and other duties as requested.

❖ **Strategy and Budgeting Department**

This office is responsible for setting up policy, goals, making and developing finance, socio-politic, administration strategies, infrastructure, environment and natural resources, coordinating and writing plans for official performing, determining directions and regulations of budget, doing research for job development and people servicing, promoting economic and society including related jobs and assigned jobs.

❖ **Finance Department**

This office is responsible for fiscal and finance, accounting of Pattaya City, receiving and spending the supported budget from the central government on projects, dealing with fringe benefits and rights of Pattaya City officers, checking of receiving and spending pensions of Pattaya City officers and permanent employees, studying, analyzing and making rules and method for collecting every kind of revenue, making estimated yearly revenues, informing calculating taxes, receiving taxes of building and land, local area maintained tax, sign tax, fees

and other revenues of Pattaya City. Besides, this office also calls for unpaid taxed, receive the request for reduce or abandon taxes, complain of tax paying or delaying of paying taxes, confiscate and sell out properties of unpaid tax person, follow and accelerate property hiring money, look after the channel of making incomes of Pattaya City properties, collecting fee for car parking, certify building and construction. Additionally, this office has to study and analyze the ways to obtain more supportive budget than the government used to pay with suitability and agreeability and do other duties as assigned.

❖ **Technical / Civil Work Department**

This office is responsible for issuing license for controlling buildings and constructions, industry and power, drafting and controlling construction, checking and analyzing construction material, planning of the city plan, looking after and protecting public area, arrangement and right of land, maintaining public utilities, buildings and construction, promoting having basic public utility to service people and tourists thoroughly like water work, electricity and etc., trafficking and transporting to link cargo transportation and touring including performing other related and assigned duties.

❖ **Public Health Department**

This office is responsible for supporting services for people in the aspects of curing diseases, controlling and protecting diseases, building up good health and developing the idea of people towards behaviors and awareness of good health, performing activities based on the public health laws and related laws, developing knowledge and form of public health service system, food nutrition, environment, distributing knowledge and technology of promoting good health, protecting diseases, controlling public health and environment in the buildings, places and communities and behaviors of looking after health including performing other related and assigned duties.

❖ Education Department

This office is responsible for administrating and developing of both formal and non-formal education and independent education as managing kindergarten education, primary education, secondary education and vocational education. Others functions are academic administration, school jobs, educational supervising, students' activities, education for young children, extension of education, library, museum, and educational network jobs, jobs related to religions, maintaining national traditions and culture for education, responsibility to jobs dealing with the king, religion and nation, sports and leisure jobs for education, activities for children in and outside schools including performing other related and assigned duties.

❖ Sanitary Mechanic Department

This office is responsible for managing protecting and draining water, protecting flood and draining water from the flooded area, designing and projecting draining water systems, controlling the construction protecting flood, water erosion, pipe system, water pumping system, maintaining machine and factory, taking the request of maintaining draining water system, managing of quality of water, taking responsibility upon developing waste water draining system, waste water treatment, analyzing quality of water and controlling pollution, managing problems of water pollution, preserving water resources, checking the quality of drained water from commercial buildings that cause water pollution to be under laws including performing other related and assigned duties.

❖ Social Development Department

This office is responsible for promoting and developing sustainability of life of people, creating justice and equity in the society in living, promoting and protecting right of person, develop potential of people, promoting the participation of people, promoting and developing family institution, studying and analyzing ways to develop society including performing other related and assigned duties.

❖ Environment Department

This office is responsible for managing environment, studying, analyzing and doing the research to solve, improve, reactivate, promote and encourage to keep environment quality, following checking the quality of environment, arrange the report of environment situation, controlling quality of air, noise, vehicles, managing of dangerous waste disposal, looking after natural resources, green zone, utilizing clean energy that does not destroy environment including performing other related and assigned duties.

❖ Procurement and Property Department

This office is responsible for supplying kinds of material for jobs, Hiring of construction work and maintaining material, equipment and constructions to support the jobs of others, controlling transferring of assets, registering, extending registering and disposing assets, developing material management, controlling and arranging making account of material and assets, providing advice about laws of purchasing and hiring and performing related duties.

❖ Tourism Promotion Department

This office is responsible for developing tourism to be tourist attraction of the country, region and world class, focusing adding value of Pattaya economic and the whole economic of the country, planning and analyzing risk factors, developing and promoting new type of tourism to draw tourists' interest, organizing tourism festival, developing tourist attractions and sports for tourism, organizing conference, exhibition and national and international recreation level, promoting art and culture for tourism, creating channel for exchanging and promulgating culture within and outside the country, creating new style tourism, designing electronic media and moving media to promote Pattaya tourism, promoting making documentary and movies and modern channel to promote tourism and making ease for foreigners to perceive this as it will create the fame of the country and making incomes to the country.

❖ Division of Personnel

This division is responsible for Pattaya City personnel administration, Pattaya City teachers, educational personnel, permanent employees, hired personnel dealing with recruiting, staffing and putting personnel into jobs, registering of personnel profile, officers' pension and promotion, developing human resources, dealing with discipline and invocation, handling secretary job of Pattaya Officer Committee including performing other related and assigned duties.

❖ Internal Audition Unit

This work unit is responsible for checking the administrating of fiscal and finance, managing of material and assets including other administration to follow policy, regulations, laws, orders and the agreement of the cabinet, examining accounts, documents and evidence for accounting, checking the system of protecting and saving all properties, and the utilization of properties worthily, efficiently, and effectively including making reports of checking and suggestion to the administrator and other related and assigned duties.

❖ Section of Laws

This section is responsible for giving advice dealing with regulations, laws of Pattaya City and other offices, coordinating with the Attorney General Office for being the representative of Pattaya City in all civil cases in every courts, dealing with the cases in administrative court, considering the case of violation, considering the case of tax invocation, enforcing administrative cases following the Act of procedure to do in official administrative cases 2006, considering the contracts of Pattaya City, suing the case of bankrupt, enforcing the case and seizing the property, considering the legislation of laws, regulations, announcement and command of Pattaya City,

considering and giving advice to other offices and performing other related duties and assigned duties.

❖ Pattaya City Office, Koa Larn Branch

This office is responsible for the job of Pattaya City Office, Koa Larn Branch in the responsibility of the Permanent Secretary of Pattaya City focusing on general administration jobs. This office also perform the job of safety keeping, civil job and sanitary job. The main offices of Pattaya City may share some parts of their jobs for Koa Larn Branch Office to do including performing other related and assigned duties.

❖ Koa Larn and the Administration of Pattaya City Koa Larn Branch ❖

General Feature

Koa Larn group comprises of Koa Larn, Kao Krok, and Koa Sark located in the west of Pattaya City. (Koa Larn is located at Moo 7, Naklua Sub-district). Koa Larn can be seen from Pattaya Beach clearly as it is 7.5 kilometers far from the shore and it occupies the area of 4.07 square kilometers.

It takes 15 minutes to go to Koa Larn by a speed boat and it takes 45 minutes by a normal boat. Koa Larn was formerly known among tourists as the coral islands as there are a lot of various kinds of sea corals.

Koa Larn is located at the latitude 12 degree 56' and the longitude 100 degree and 47'. The longest part is about 4.65 kilometers and the widest is 2.15 kilometers and 90% of the area is mountainous.

Famous Tourist Attractions on Koa Larn

1) Tawaen Beach. It is at the north of the island about 750 meters long with its natural beauty of white sand and clear blue water. There are coral lines at both ends of the beach.

2) Sangwarn Beach. It is a small beach located near Tawaen Beach with the length of 150 meters. The beauty of the beach is like Tawaen Beach but it is quieter, so it is famous for European sun bathers. The most beautiful time of this beach is during December to April as the sea is calm and suitable for seeing corals.

3) Tong Luang Beach. It is a small and quiet beach suitable for tourists who like privacy. The main activity of this beach is snorkeling seeing the corals. There are glass bottom boats for seeing corals if the tourists do not like walking or snorkeling to see the corals.

4) Tian Beach. This is the second beautiful beach with the length of 500 meters in the west of the island. People move from Tar Waen Beach to this beach when there is a monsoon season.

5) Samae Beach. It is located at the southwest of Koa Larn with the length of 350 meters. The beach is quiet and beautiful suitable for a rest and swimming. At this moment, the land scape is improved including planting trees and the convenient walkway. There are also standard restaurants. Tourists can visit the building saving power by using a solar system and the nearby area is the windmill farm producing electricity which is interested and visited by private and government sectors.

6) Nuan Beach, It is located in the south of Koa Larn with the length of 250 meters, but it is occupied by a private owner. Tourists can see beautiful and perfect corals as there are not many tourists visit this place.

7) Tar Yai Beach. It is not a big beach with the length of 100 meters, but it is quiet and shading with white sand, clear water and big and small stones like natural scripture.

8) Koa Krok. It is a small island located in the south of Pattaya City 8 kilometers from Pattaya beach or northwest of Koa Larn. The longest of the island is 550 meters with 150 meters width. There is only one beach on this island.

9) Koa Sark. It is located in the west of Pattaya City, 8 kilometers far from Pattaya shore. There are two beaches with white sand on this island. There are also accommodation and restaurants there, too.

Land Transportation on Koa Larn

Type	Route	Numbers	Price
1. Sorng Taew (Mini bus)	- Nar Baan – Tawean Beach - Nar Baan – Samae, Tian Beach - Nar Baan – Nuan Beach - Tawaen Beach – Samae Beach - Tian Beach - Tawaen Beach – Nuan Beach	33	Start from 40 Baht : person and increase by the distance
2. Motorcycle	On demands	120	Start from 20 baht person and increase by the distance

Time Table of Ferry to Koa Larn

Depart from Pattaya (Balihi Cape)		Depart from Loa Larn (Narbarn Pier)	
Departure time	07.00 a.m.	Departure time	06.30 a.m.
	08.00 a.m.		07.30 a.m.
	09.00 a.m.		09.30 a.m.
	10.00 a.m.		12.00 p.m.
	11.00 a.m.		02.00 p.m.
	12.00 p.m.		03.30 p.m.
	01.00 p.m.		05.00 p.m.
	02.00 p.m.		06.00 p.m.
	03.30 p.m.	<u>Depart from Hard Tawaen Pier</u>	
	05.00 p.m.		01.00 p.m.
	06.30 p.m.		02.00 p.m.
			03.00 p.m.
			04.00 p.m.
			05.00 p.m.

Statistic Showing Koa Larn Population from 2016 – 2018

Population	2016	2017	2018	Increasing Population	Increase/ Decrease (%)
Total	2,869	2,912	2,934	22	+0.75
Male	1,428	1,438	1,454	16	+1.10
Female	1,441	1,474	1,480	6	+0.41
Households	625	619	626	7	+1.19

Source : Office of Local Register of Pattaya City, February 2019

Statistic Showing the Numbers of Tourists Visiting KoaLarn in 2009 – 2018

Year	Numbers of Tourist (in person)
2009	1,460,378
2010	2,082,502
2011	2,737,061
2012	2,848,709
2013	2,747,312
2014	1,622,923
2015	5,506,065
2016	4,663,444
2017	4,447,604
2018	3,715,654

Source: Office of Pattaya city branch Ko-Lan, June 2019

Information of Accommodation and Other Business on Koa Larn

Business / Service	Numbers
1. Daily accommodation business owners	140 owners/1,300 rooms
2. Monthly accommodation business owners	13 owners/150 rooms
3. Restaurants	47
4. Public telephone boxes	3
5. Telephone signal posts	4

Source : Office of Pattaya city branch Ko-Lan, June 2019

Number of Pattaya City Officers, Permanent Employees and Hire Personnel Information in March 2018

No	Office	General			Academic				Facilitate Local			Administrative Local			Total Officers of Pattaya	Permanent Employees	Employees on Spec. jobs	General Employees	Grand Total Staff
		Action	Skill	Expert	Action	Skill	Expert	Spec. Expert	L	M	H	L	M	H					
1	Permanent Secretary Off.	14	27	-	10	7	-	-	6	2	1	-	1	3	71	26	154	118	369
2	Strategic Plan and Budget	2	3	1	4	9	-	-	5	1	1	-	-	-	26	1	14	-	41
3	Finance Off.	8	9	-	8	4	-	-	6	-	1	-	-	-	36	3	27	7	73
4	Technical /Civil Work Off.	7	16	7	5	15	-	-	12	-	1	-	-	-	63	22	61	68	214
5	Public Health Off.	2	2	-	28	30	2	1	9	4	1	-	-	-	79	3	39	21	142
6	Education Office	5	2	-	15	5	2	-	4	2	-	-	-	-	35	-	21	9	65
7	Sanitation Works Technician Off.	2	6	3	2	1	-	-	4	1	1	-	-	-	20	11	30	39	100
8	Social Development Off.	-	2	-	9	3	-	-	2	2	1	-	-	-	19	-	18	1	38
9	Environment Off.	1	2	-	3	-	-	-	2	1	1	-	-	-	10	44	40	193	287
10	Procurement and Property Off	6	5	-	2	-	-	-	2	1	-	-	-	-	16	-	9	-	25
11	Tourism Promotion Off.	-	1	-	7	7	-	-	2	2	1	-	-	-	20	-	27	2	49
12	Personnel Division	1	2	-	9	6	-	-	3	-	-	-	-	-	21	-	7	2	30
13	Laws Section	1	-	-	7	6	1	-	-	-	-	-	-	-	15	-	6	1	22
14	Interior Audit Sub Division	1	-	-	-	1	-	-	-	-	-	-	-	-	2	-	4	-	6
15	Koa Lam Branch	1	4	1	4	-	-	-	3	-	-	-	-	-	13	2	36	52	103
	Total Staff	51	81	12	113	94	5	1	60	16	9	-	1	3	446	112	493	513	1,564

Source : Division of Personnel , Pattaya City

January 2019

Number of Teachers under Pattaya City

Classified by Academic Status

Survey in January 2019

School	Number of Teachers Under Pattaya City Classified by Academic Status					Total
	Teacher	Kor Sor	Kor Sor	Kor Sor	Kor Sor	
	Assistant	1	2	3	4	
Muang Pattaya 1	-	8	7	10	-	25
Muang Pattaya 2	4	11	7	15	3	40
Muang Pattaya 3	3	14	18	18	1	54
Muang Pattaya 4	2	10	15	5	-	32
Muang Pattaya 5	5	12	17	16	-	50
Muang Pattaya 6	5	13	14	7	1	40
Muang Pattaya 7	6	15	26	18	1	66
Muang Pattaya 8	5	12	27	24	1	69
Muang Pattaya 9	8	13	16	19	1	57
Muang Pattaya 10	4	4	4	3	-	15
Muang Pattaya 11	1	10	11	12	1	35
Total	43	122	162	147	9	483

Source : Personnel Division, Pattaya City

January 2019

**The Report of the Agreements of Eastern Economic Corridor Developing Policy
Committee, Eastern Economic Corridor Office (EECO)
on 18 November 2019 (Some parts)**

Agenda 4.1 The plan to develop public health services in Eastern Economic Corridor

The committee has agreed that there will be 14 essential projects to develop public health services in Eastern Economic Corridor as follows:

No	Developing Projects	Core related organizations
1. The same information		
1	The project of population information development with big data.	- EECO - Ministry of Public Health - Office of National Health Insurance
2	The project of protecting foreign labours with health insurance.	- Ministry of Labour - Ministry of Public Health
3	The project of developing health insurance system for foreign tourists visiting EEC area.	- Ministry of Sports and Tourism
2. With The cooperation of Government Sector and Private Sectors		
4	The project to develop medical emergency service	- Institute of National Medical Emergency - Thailand Airway Administration Office - Ministry of Public Health
5	The project to develop the primary medical services and to reduce the numbers of patients in provincial hospitals.	- Rayong Hospital - Chonburi Hospital - Social Welfare Insurance Office - Office of National Health Insurance
6	The project to develop the service for new born babies with low weight.	- Ministry of Public Health - Private Hospitals
7	Pluakdaeng Hospital 2 (Rayong) Project.	- Pluakdaeng Hospital - Rayong Hospital 2

		- Private Hospitals
No	Developing Projects	Core related organizations
8	Chonburi Hospital 2 Project	- Chonburi Hospital - Private Hospitals
9	Rayong Hospital 2 Project	- Rayong Hospital. - Private Hospitals
3. Single system network		
10	Medical School Network Project	- Somdejprabromrachachonanee at Sriracha Hospital - Faculty of Medicine, Burapha University - Chonburi Hospital
11	The project to develop the potential of Princess Thepatanarachasuda Hospital, Rayong and Occupational Medicine and Environmental Medicine.	- Princess Thepatanarachasuda Hospital, Marbtaput, Rayong - Disease Control Department, Ministry of Public Health
12	The project of Occupational Medicine of Travelling (Travel Medicine; Bamrardnaradoon 2)	- Disease Control Department, Ministry of Public Health - Queen Sirikit Hospital (Navy) - Somdejprabromrachachonanee at Sriracha Hospital
13	The project to promote health of working places for better living of working ages in the case of EEC.	- 6 work units under MOU - The Office of Health Promotion Fund - Office of National Health Insurance - EEC Office
14	The project of “Lung” in EEC area.	- EEC Office - Local Administration Organization - Department of Health, Ministry of Public Health - Private Sectors

The agreement of

Agenda 4.3 Waste Management to Sustainable Waste Management Model

The Committee has agreed as follows:

1. Eastern Economic Corridor Office (EECO) cooperates with provinces and Local administration organizations in EEC area purpose waste management project in EEC area to be the model of sustainable waste management. This includes waste on the land, on the island, and in the sea within 3 months with the cooperation of Global Power Synergy PLC. to study the management of completed waste management suitable for the amount of waste management demand in the future.

2. The provinces in EEC area are the core units with the cooperation of local administration organizations and public sectors seeking for the proper places to build the factory to deal with waste. Moreover, the plant generator powered by waste under EEC plan will take part in this project.

3. Ministry of Energy will consider to buy the electric current from generator plant used waste as fuel in EEC area.

Agenda 4.4 The project of investing on Intelligent Cargo Management Center in EEC for supporting special commercial of industrial business.

The secretary reports that:

1.1 Alibaba group demands to invest in setting up “Smart Digital Hub” in EEC area which will be the center to administrate goods using electronic ways to control job performing and the equipment using in doing job will be able to link each other share information with each other as internet of things, server, data center, co-location located in Thailand. Besides, there will be the automation for working in the merchandises intelligent managing center as a directing way of transporting goods, auto-car for goods transportation, robots system for working, auto-checking and electronic system for analyzing working information for improving working automatically (Artificial Intelligence). This for buying and selling goods through E-commercial system which is the form to support Thai SMEs that is easy for both overseas and domestic consumers.

1.2 Since April 2019, Alibaba group has signed the cooperation with Thai Customs Department, Department of Industrial Support, Department of Overseas Trading Support, Tourism Organization of Thailand, Eastern Economic Corridor Office (EECO) in cooperation to develop and set up “Smart Digital Hub”, personnel development and support the policy of “Digital Tourism in EEC area as follows:

1.2.1 The cooperation in trading, investing and pushing economic between Eastern Economic Corridor Office and Alibaba.com Singapore E-commerce Private Limited that is the cooperation in developing digital economic of Thailand and the support of Thailand 4.0. This MOU significantly push and facilitate legal ways to set up “Smart Digital Hub” in EEC area and support exporting of Thai SMEs for exporting agricultural and other products to the world market through Alibaba Platform. This also aims to develop Thai producers’ knowledge in E-commerce and tourism, especially tourism in communities and minor destinations. Alibaba has purposed to invest in Smart Digital Hub and signed in the agreement.

1.2.2 The is the cooperation in investing on “Smart Digital Hub” in EEC area among Eastern Economic Corridor Office, Department of Customs and Cainiao Smart Logistic Network Hong Kong Limited. In this MOU, Alibaba Group will invest on developing “Smart Digital Hub” and the knowledge of international E-commerce management, Logistic system, and the frame of customs ways that Alibaba is specialized in.

1.2.3 The is the cooperation in developing SMEs and personnel dealing with digital among Department of Industrial Support, Department of Overseas Trading Support and Alibaba Business School to teach the knowledge of technology to Thai medium and small producers or SMEs in the parts of agriculture and other business.

1.2.4 There is the cooperation in digital tourism and tourism in minor cities between Tourism Organization of Thailand and Zhejiang Fliggy Network Technology Company Limited. The purpose of this MOU is to build up the platform to facilitate in room booking, ticket booking, and tour booking that will encourage Thai tourism.